

*Advanced CAMP 19-20 June 2008*

# Cloud Computing and the Internet Service Bus

Nigel.Watling@microsoft.com

# Fundamental Industry Change

Enterprises

Dynamic services  
Dramatic savings

ISV's

Faster invention  
Greater reach  
Dramatic savings

*Software as a Service  
Cloud Computing*

New Businesses

Instant scale  
Zero capital

SI's/VAR's

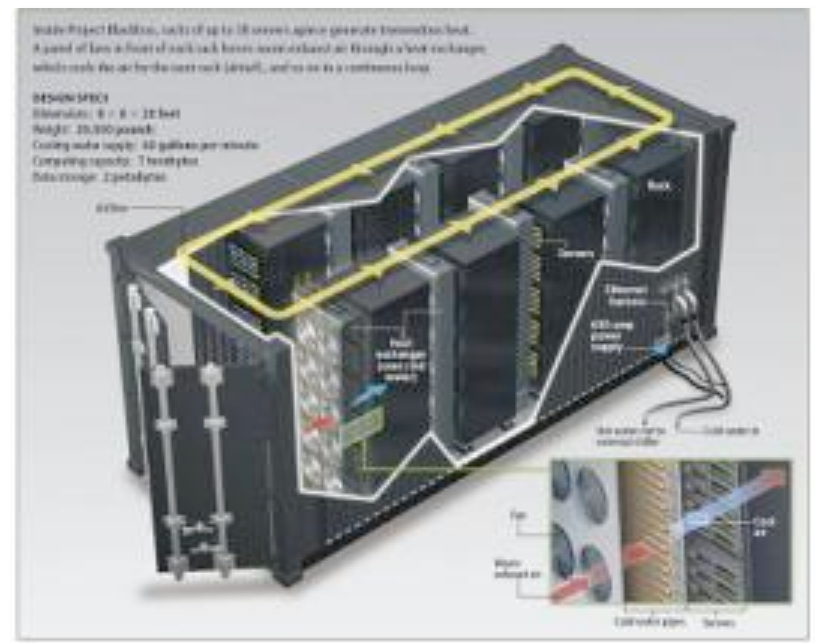
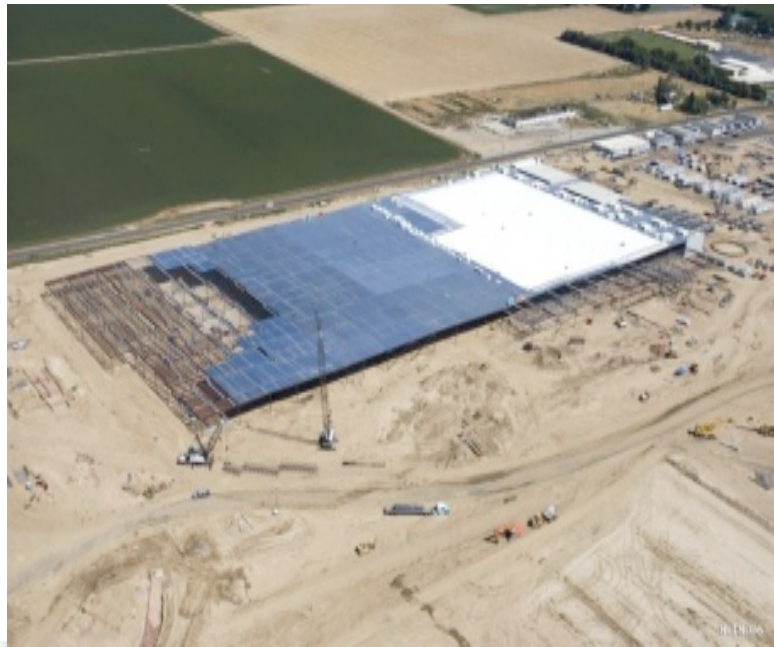
Preservation  
New growth

Hosters/Service Providers

Nextgen capabilities  
Customer stickiness  
Survival

# Microsoft Data Centre in Chicago

- Cost: \$500 million
- Size: 500,000 sq. ft. facility (10 football fields)
- Container-based



- Microsoft deploys 10,000 new servers/month

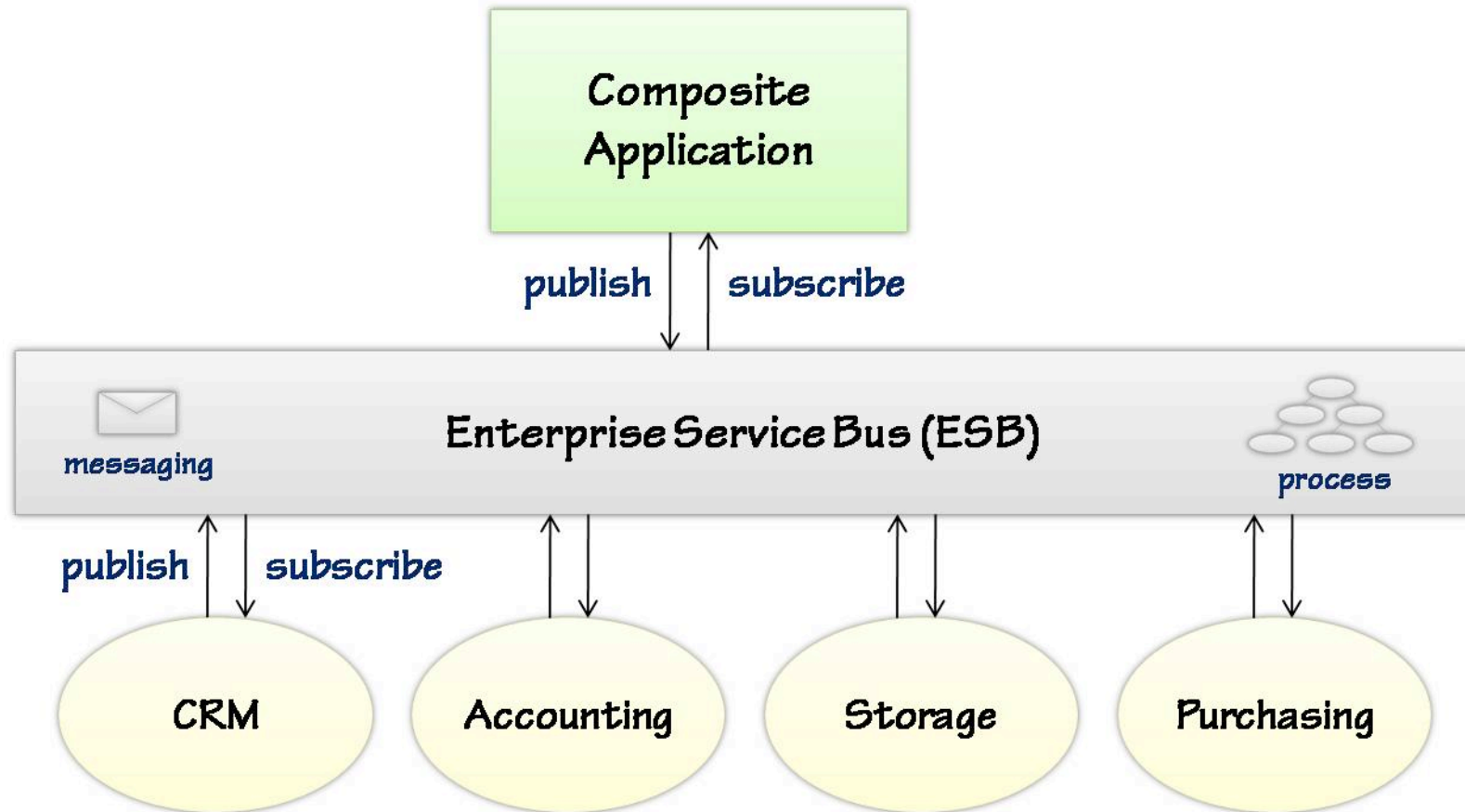
# Microsoft and Cloud Computing

- Allow people to utilize the cloud using the skills, tools and technologies they already have
- Mixture of on-premises and in the cloud
- Software + Services

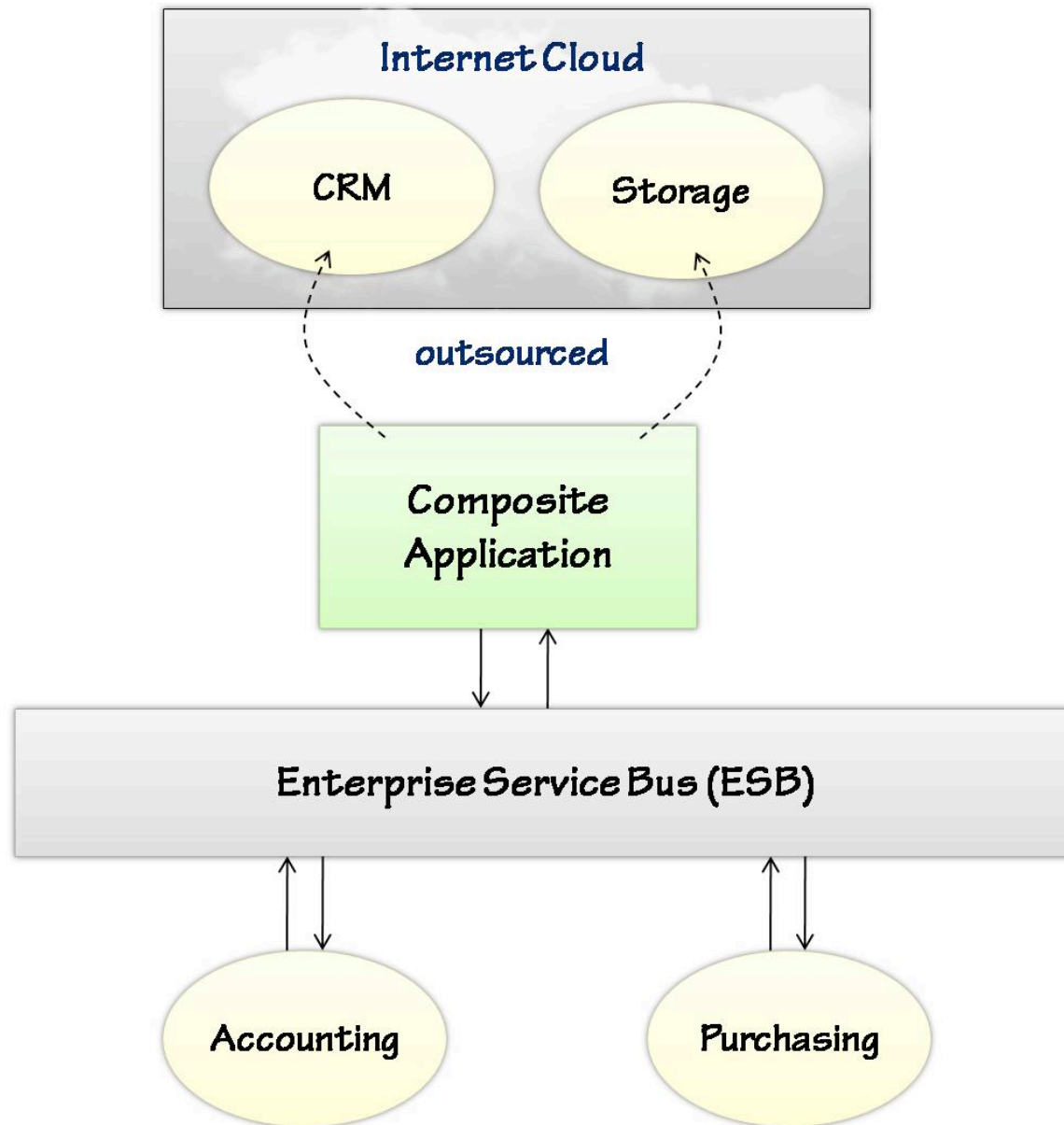
# Services are great but...

- How do I expose a service broadly?
  - Client callbacks, organizational boundaries, etc.
- How do I handle identity and access control?
  - For a service? For an organization
- How do I interoperate?
  - Multiple vendors and/or REST
- How do I orchestrate many service calls?
- ...

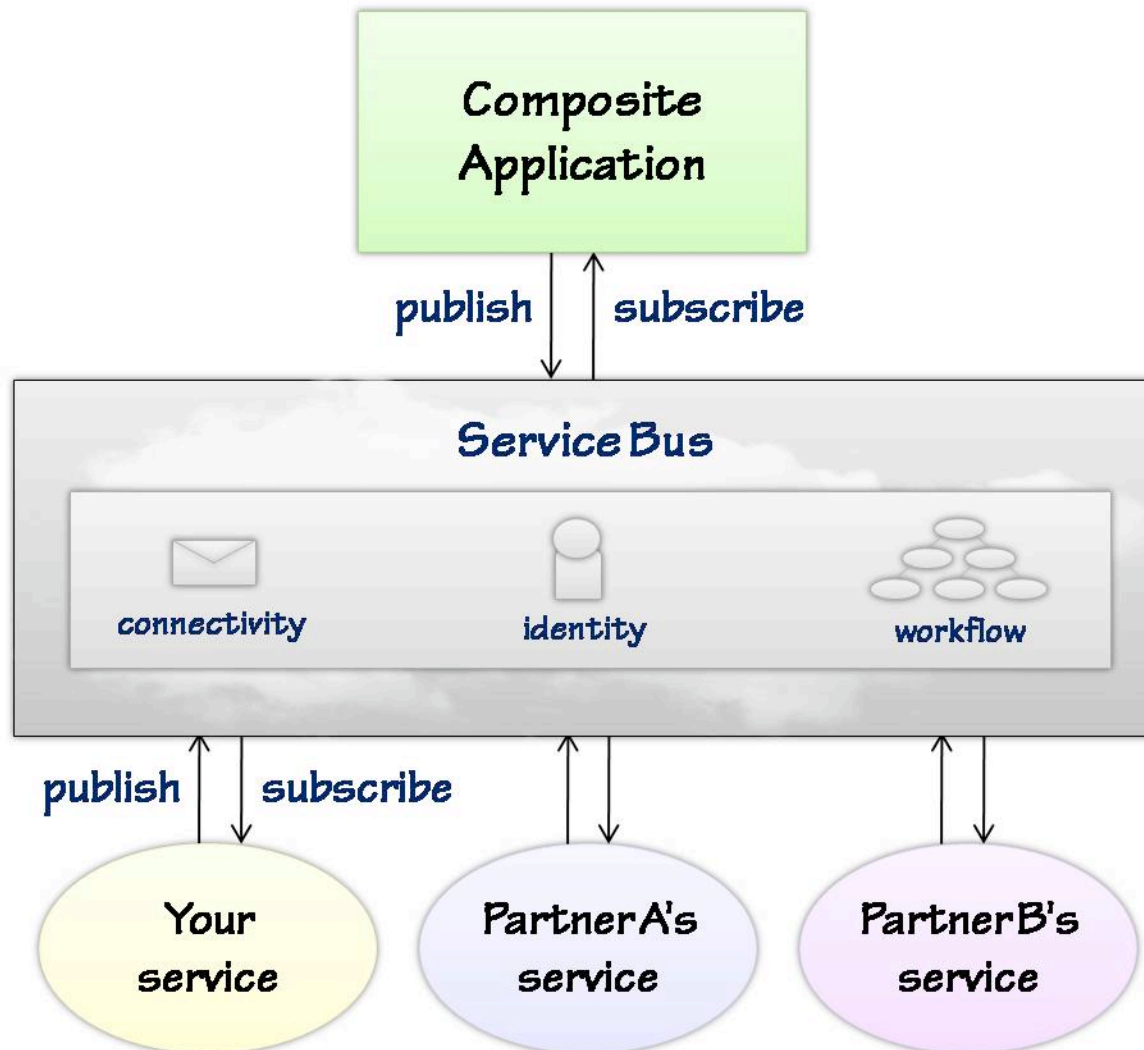
# Enterprise Service Bus (ESB)



# Software as a Service (SaaS)



# ESB + SaaS = Internet Service Bus





# The Internet Service Bus

- Services hosted by Microsoft for:
  - Firewall friendly messaging
  - Scalable pub/sub engine for the internet
  - Standards-based security
  - HTTP/REST transformations
  - Discoverability
  - Workflow over services
- Currently in CTP as *BizTalk Services*
  - BizTalk Services != BizTalk Server
- Available at <http://biztalk.net>

Questions?