

Arab e-Infrastrcure Integration Globally

December 2011



مؤسسة قطر
Qatar Foundation
www.qf.org.qa

إطلاق قدرات الإنسان.
Unlocking human potential.

Great Vision For The Future



Qatar Foundation is supporting Qatar on its journey from Carbon Economy to Knowledge Economy by unlocking the human potential.



We are unlocking human potential by building a platform for innovation and fostering a culture of quality and excellence.

Unlocking Human Potential



Education

- Bringing world-class education to Qatar to create our own education sector in which young people can develop skills required for the knowledge economy.



Science & Research

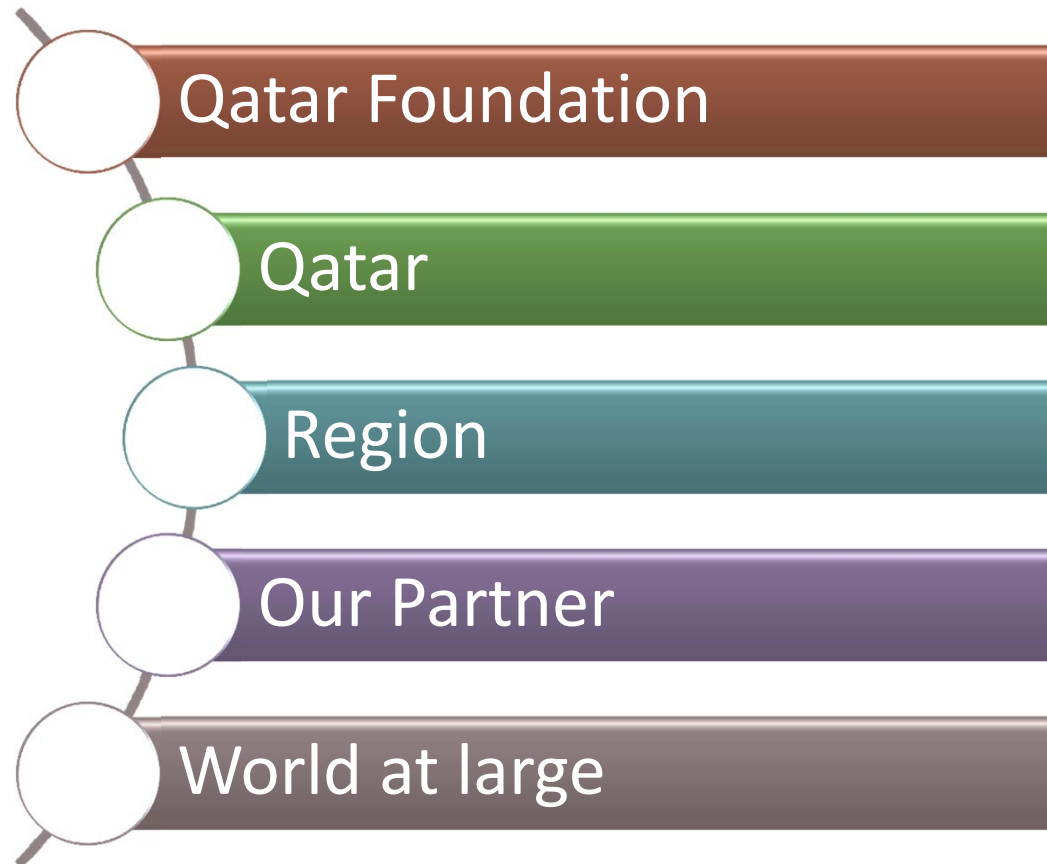
- Building Qatar's innovation and technology capacity by developing and commercializing solutions through key sciences.



Community Dev.

- Fostering an open progressive society appropriate to the knowledge economy, while enhancing our cultural life and protecting Qatar's heritage.

Who Benefits ?



Education City





Main Challenges

MASSIVE SCOPE
& GROWTH

COMPLEX &
DIVERSIFIED

URGENCY &
TIME
COMPRESSION

AVAILABILITY &
PERFORMANCE

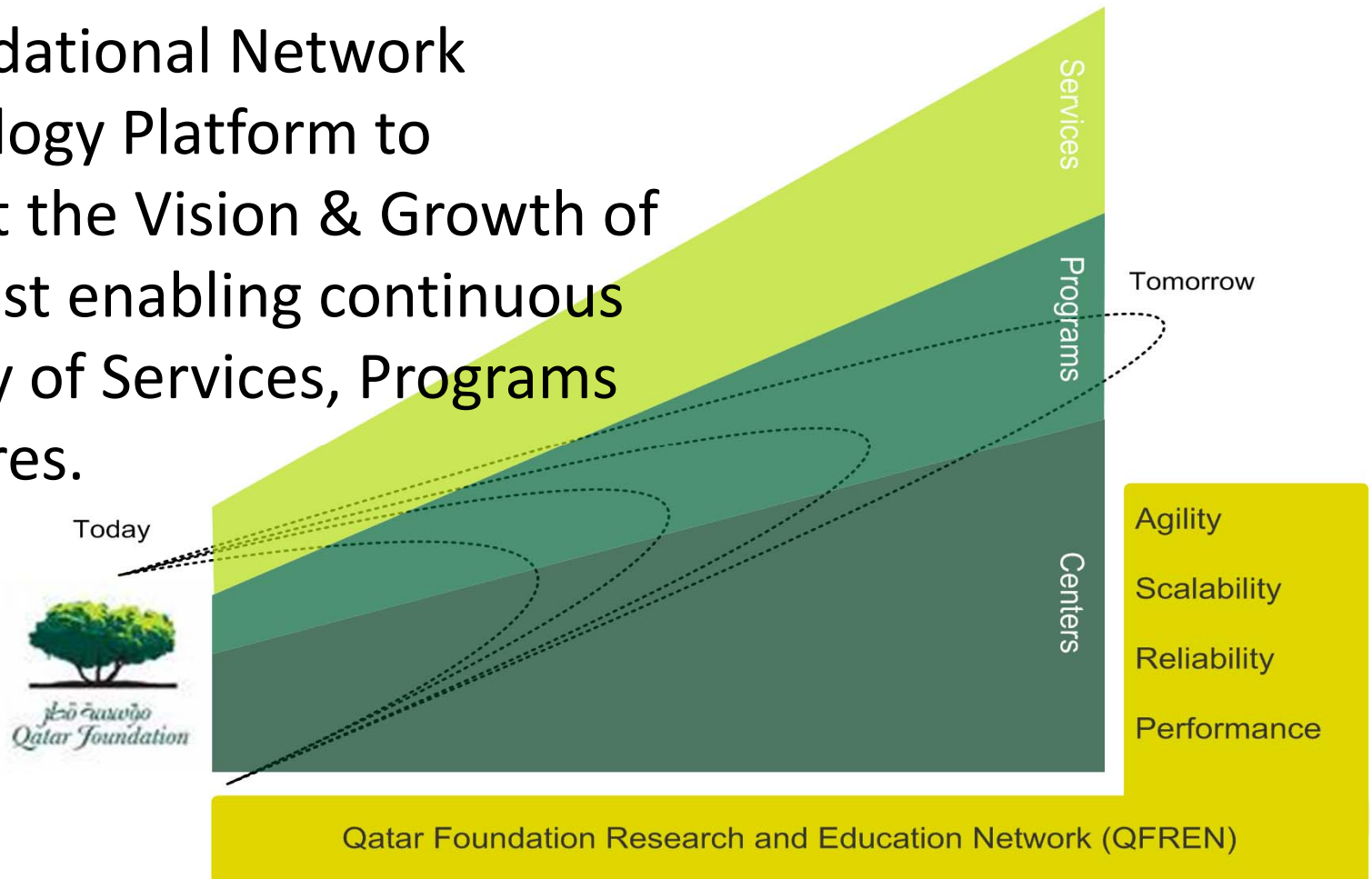
QF Research & Education Network



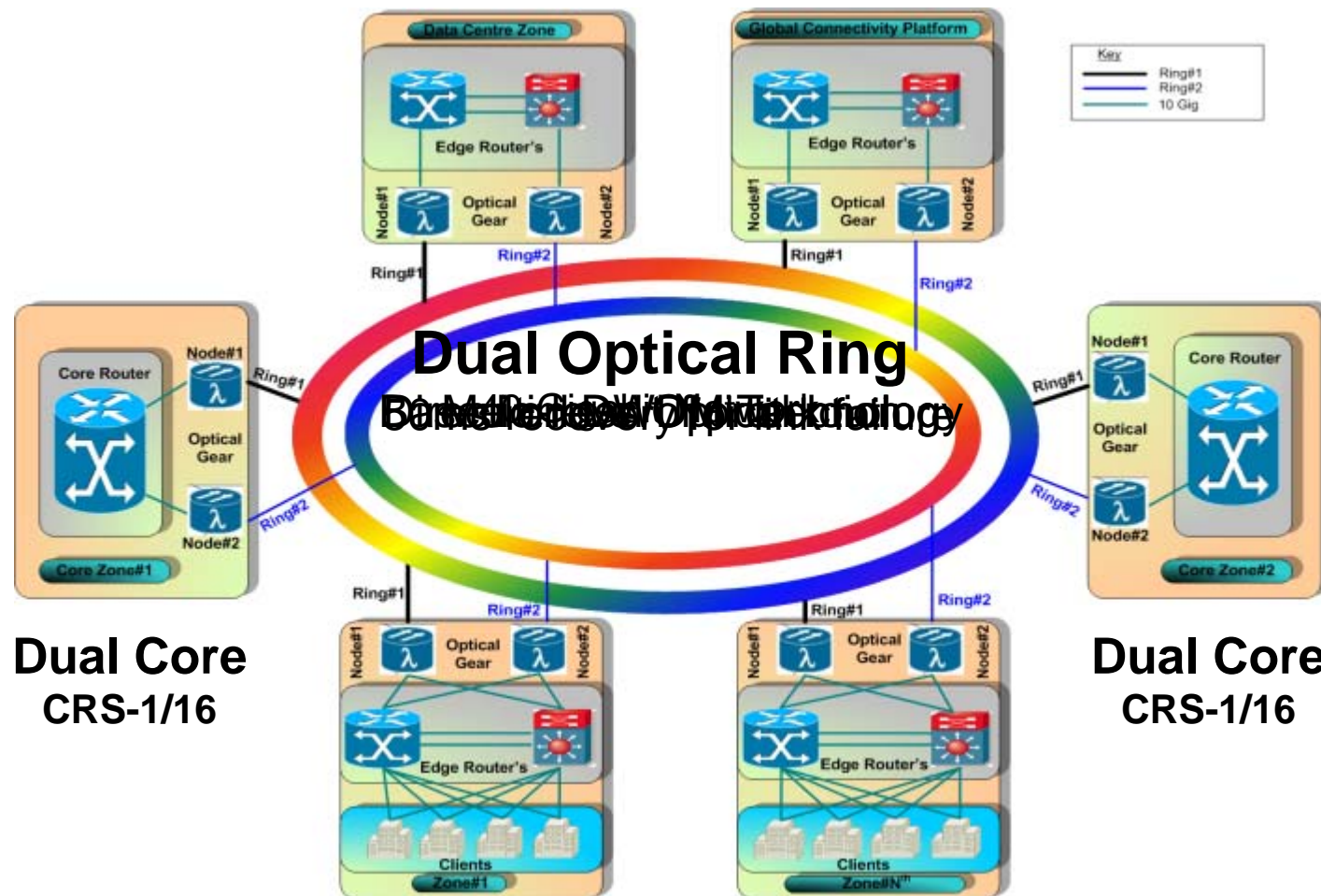
QFREN A Strategic Asset ... @ the core of QF

QF Research & Education Network

A Foundational Network
Technology Platform to
support the Vision & Growth of
QF whilst enabling continuous
delivery of Services, Programs
& Centres.



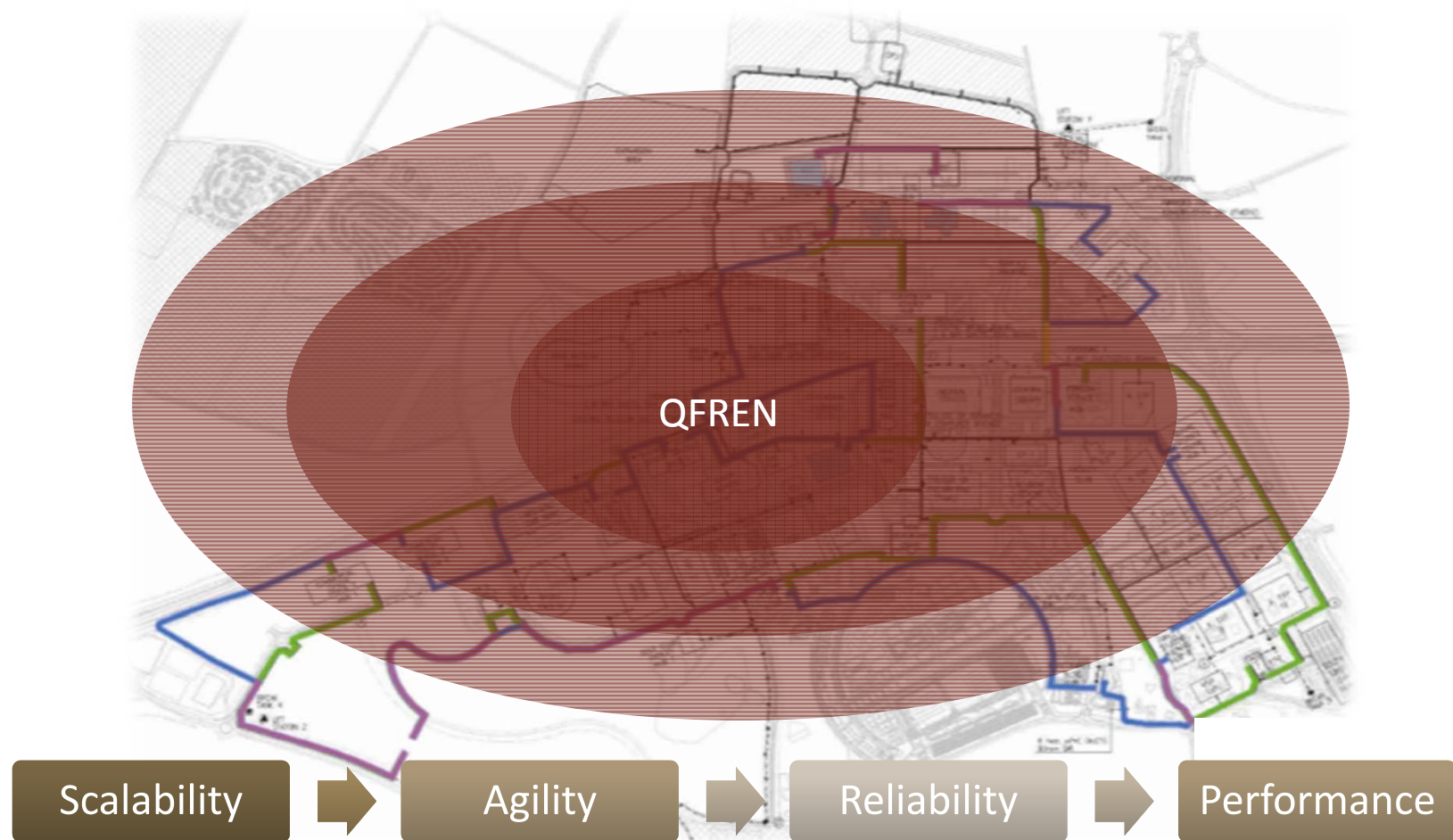
A Cutting-Edge Technology Platform



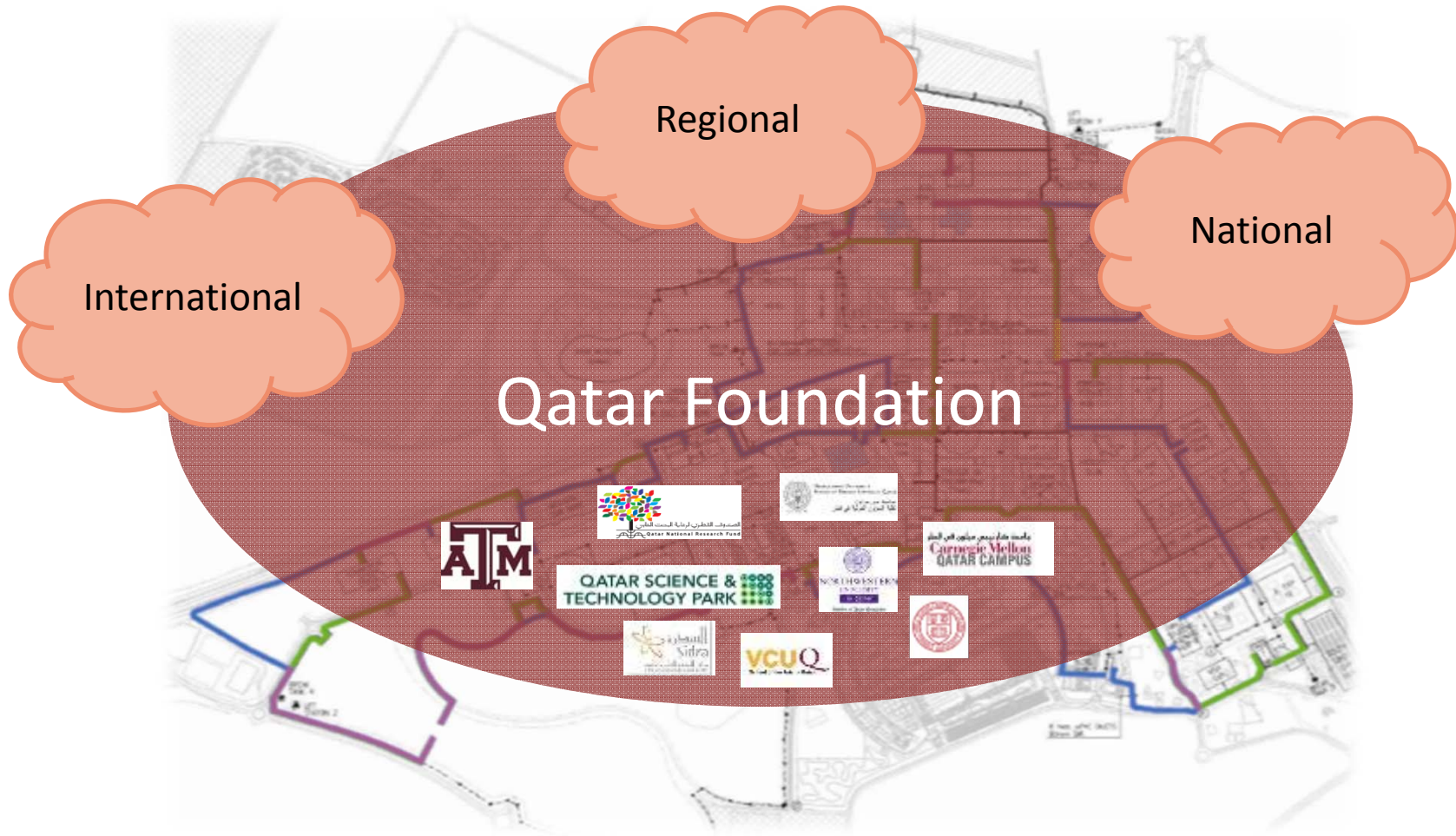
A Cutting-Edge Technology Platform

- **High Speed Core:** *Can scale up to 92Tbps x 2 , Total = 184Tbps*
- Current Backbone speed is 160Gbps (4 x 40Gbps at the core)
- Current speed at each zone hub is 40Gbps (2 x 10Gbps on EACH ring x 2) **upgradable**
- Multiple layer of high Availability/Redundancy
- Fast Service Provisioning.

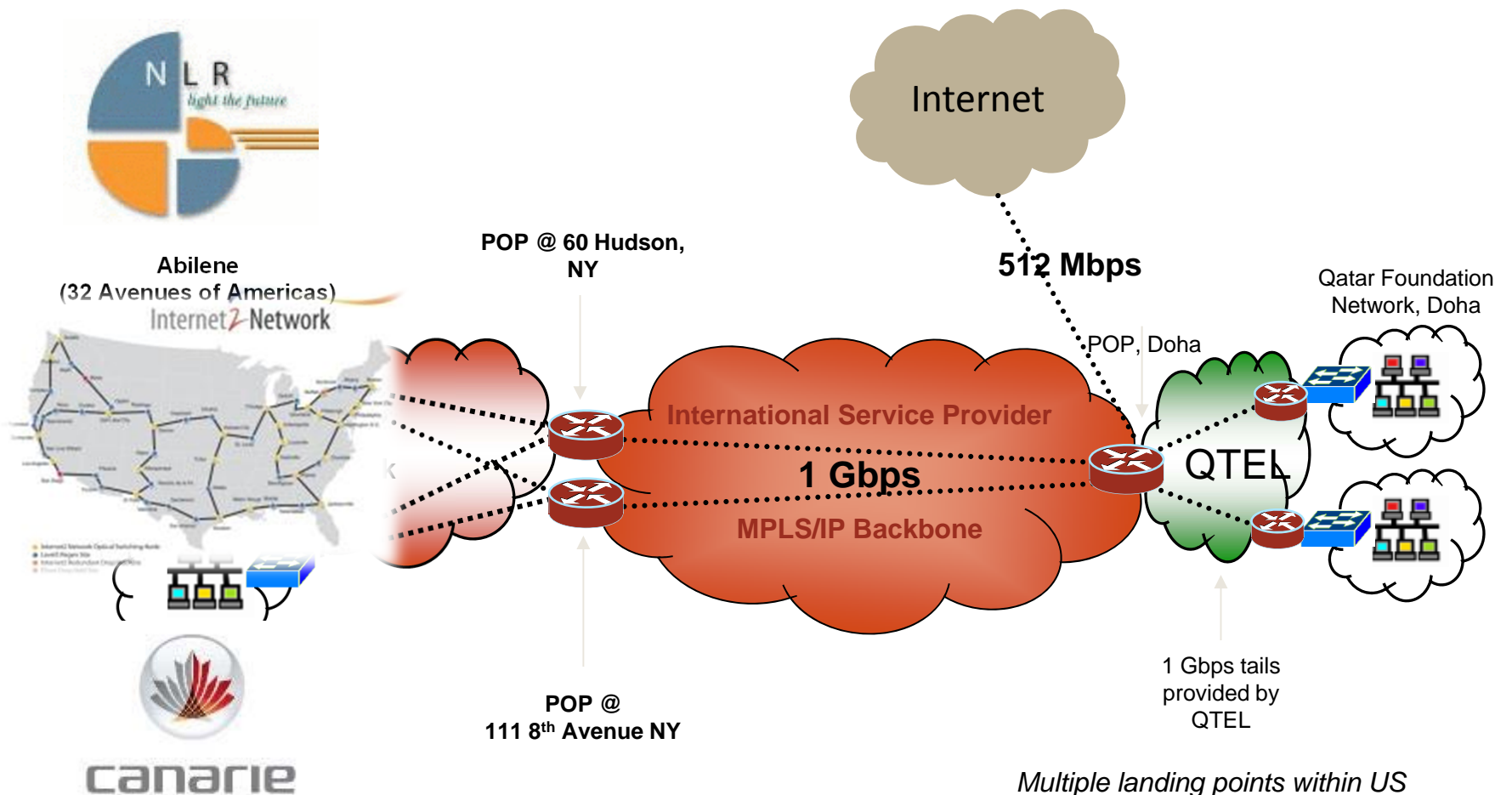
QFREN Rapid Expansion



Collaborative Model



International Connectivity



*Multiple landing points within US
Tertiary backup through Pacific Route-LA
99.9 % Availability SLA with Q-Tel*

Gulf Bridge International

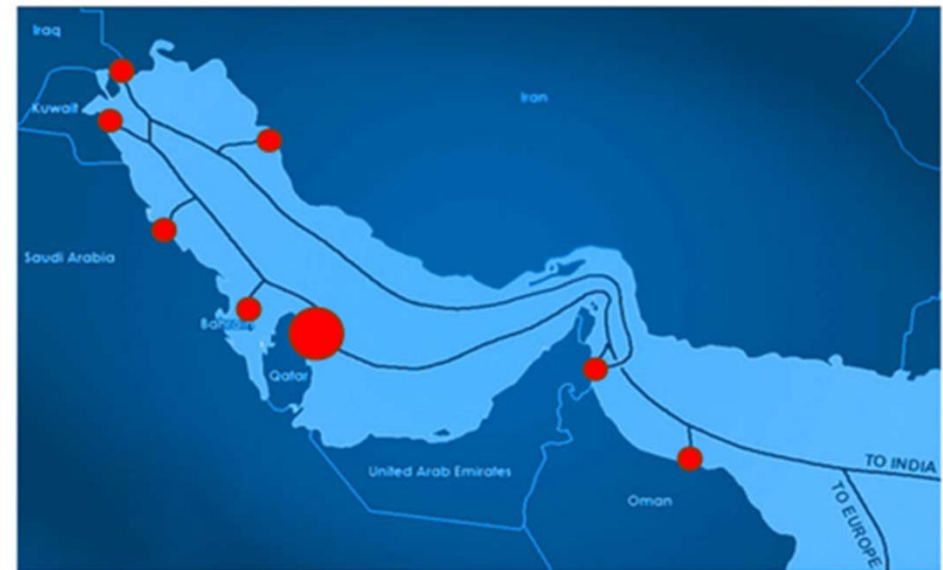
- Middle East's first privately owned submarine cable operator.
- GBI's undersea cable network will connect the Gulf region states in a '**Gulf Ring**' system and will have an onward connectivity to Far East via India and Europe via Italy.
- GBI plan to invest **\$445m** into the project.
- 128 x 10 Gb/s wavelengths per fibre pair to achieve a total system design capacity of **2.56 Terabits / Sec**



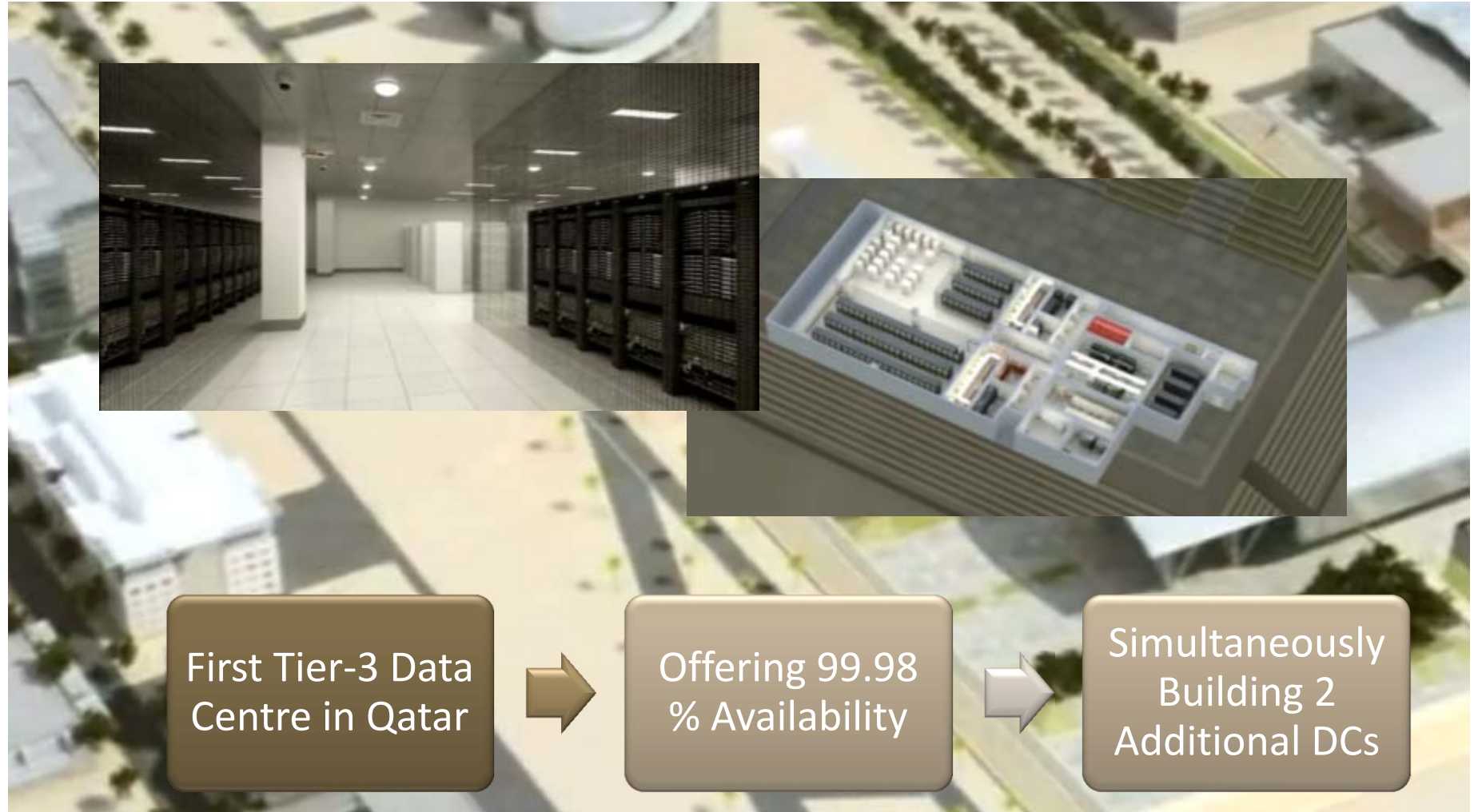
Connectivity To Far East & Europe



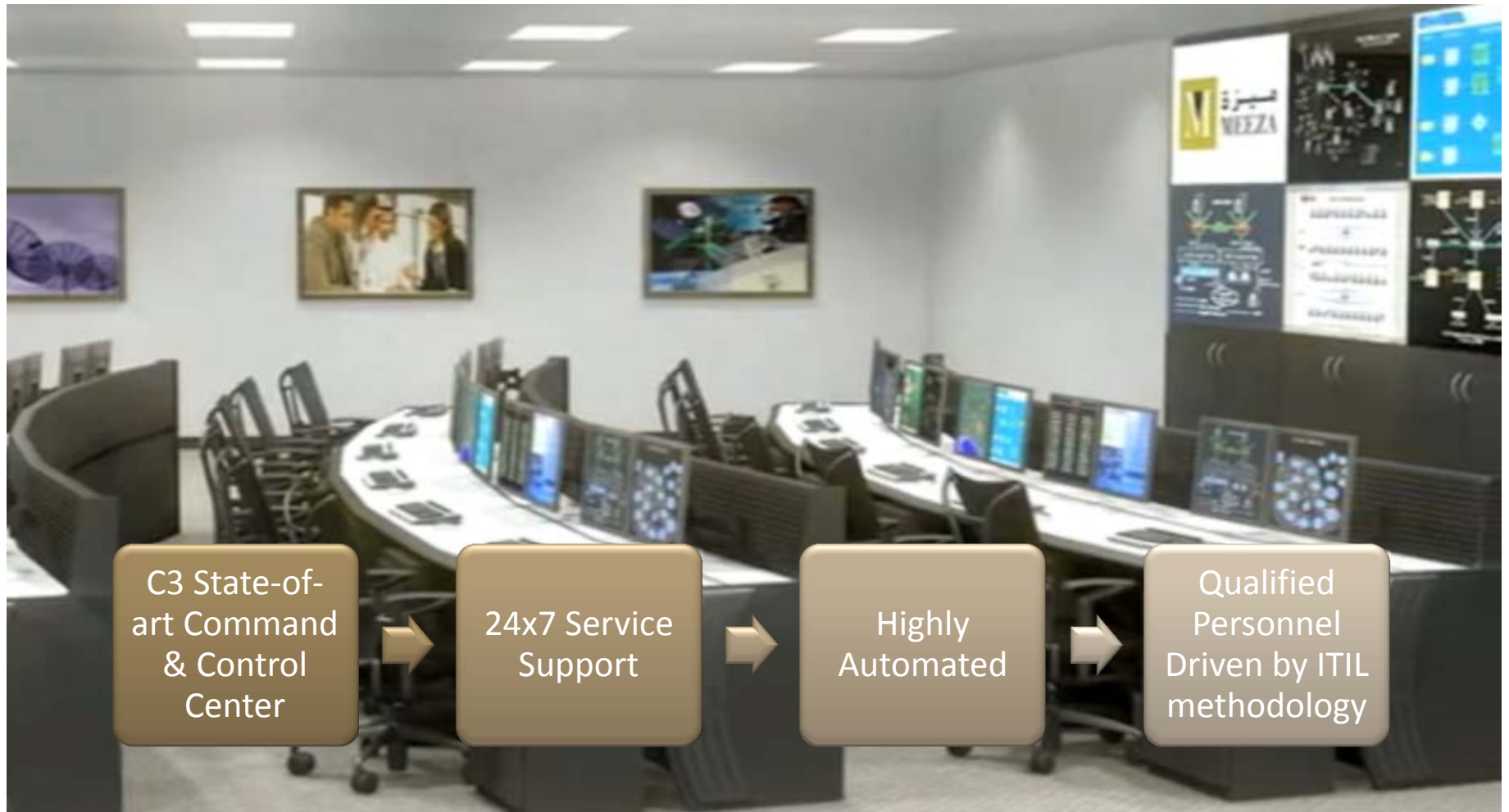
GBI[™] International connectivity map
Gulf Bridge International



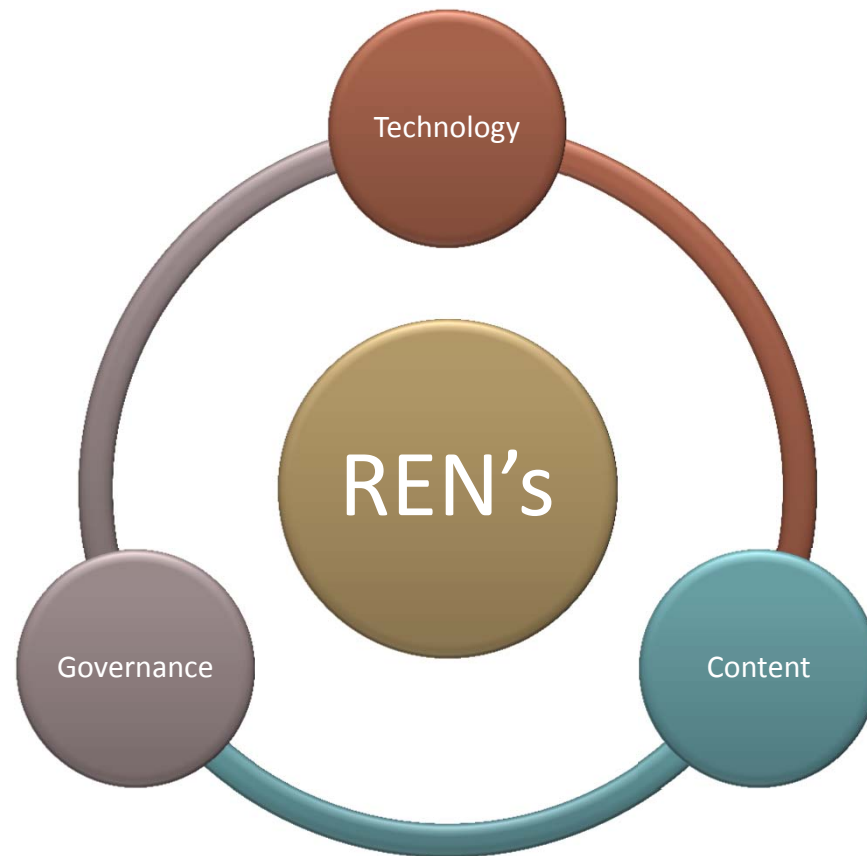
MEEZA's Tier-III Datacenters



MEEZA's Command & Control Center



Important Consideration



Thank You

Sa'di M. Awienat
IT Director
Qatar Foundation
Email: sawienat@qf.org.qa



مؤسسة قطر
Qatar Foundation
www.qf.org.qa

إطلاق قدرات الإنسان.
Unlocking human potential.