



Nov 2010

# Qatar Foundation Research & Education Network

Sa'di M. Awienat



# Qatar Foundation

for Education, Science and Community Development

“Unlocking Human Potential”



للدراسة والعلم وتنمية المجتمع  
*Qatar Foundation*  
for education, science and community development



# Mission and Vision

Guided by the principle that a nation's true wealth is its people. Our goal is to develop human potential:

By creating a network of centers committed to delivering first-rate education, supporting science/research and promoting community development.

By partnering with world-class educational and research institutions specialized and focused in various areas.

By building a unique Education City, featuring state-of-the-art technology and facilities, that is a hub for the creating, sharing and finding practical uses of knowledge.



# Education City Master Plan





# Members of Qatar Foundation

The image displays a collection of logos for member organizations of Qatar Foundation, arranged around a central graphic of a large orange '+50'. The logos include:

- قناة الجزيرة للأطفال** / Al Jazeera Children's Channel
- الأطفال** (The Children)
- مميزة MEEZA**
- QATAR SCIENCE & TECHNOLOGY PARK**
- اوركسترا قطر الفهارمونية** / Qatar Philharmonic Orchestra
- الجمعية القطرية للسكري** / Qatar Diabetes Association
- ATM**
- RAND** / RAND-QATAR POLICY INSTITUTE
- QMDI** / Qatar MCE Development Institute
- دار الإنماء الاجتماعي** / Social Development Center
- Qatar Academy**
- VCUQ** / School of the Arts in Qatar
- كلية الدراسات الإسلامية** / Faculty of Islamic Studies
- Sidra** / مركز البحوث الطبية والبيوت / Sidra Medical and Research Center
- Georgetown University** / SCHOOL OF FOREIGN SERVICE IN QATAR
- جامعة جورج تاون** / كلية الشؤون الدولية في قطر
- vodafone**
- TLC** / مركز التعلم
- لكم القرار** / Qatar Foundation
- qatardebate** / مناظرات قطر
- THE DOHA DEBATES**
- Qatar Leadership Academy** / أكاديمية قطر للقادة
- REACH OUT TO ASIA** / Member of Qatar Foundation
- ABP** / برنامج الجسر الأكاديمي / Academic Bridge Program
- GBI** / Gulf Bridge International
- NORTHWESTERN UNIVERSITY** / in Qatar / Member of Qatar Foundation
- DOHA LAND**



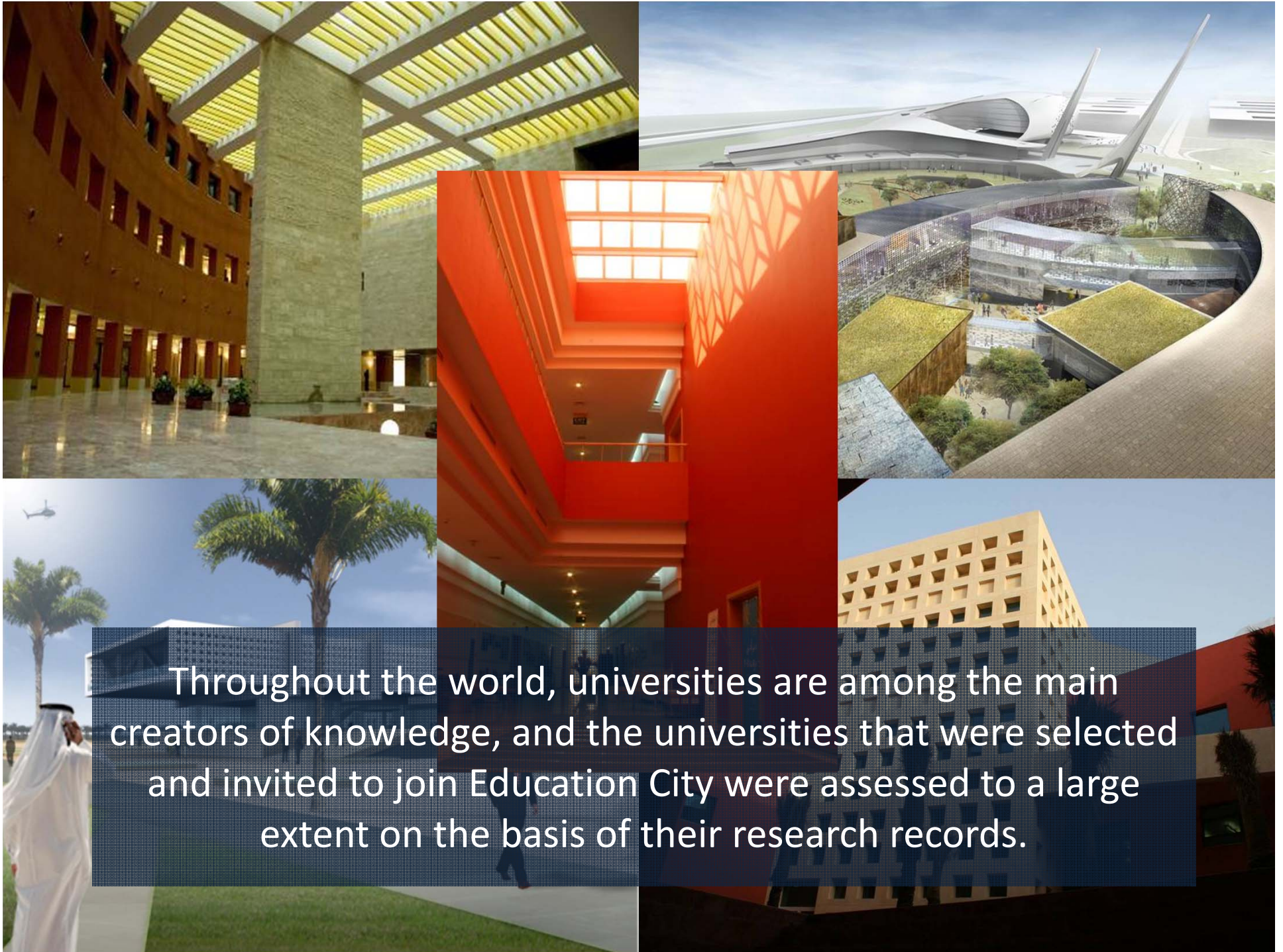
# Qatar Science & Technology Park





# The Sidra Digital Hospital





Throughout the world, universities are among the main creators of knowledge, and the universities that were selected and invited to join Education City were assessed to a large extent on the basis of their research records.





## The Challenge ...

---

- The Vision and scope of Qatar Foundation is massive.
- The Growth of Qatar Foundation is Substantial
- **How can we support QF Business Needs ?**
- **What will be an adequate IT Infrastructure ?**



# Shared Service Concept

Centralized / Decentralized



# QF Research & Education Network



QFREN A Strategic Asset ... @ the core of QF

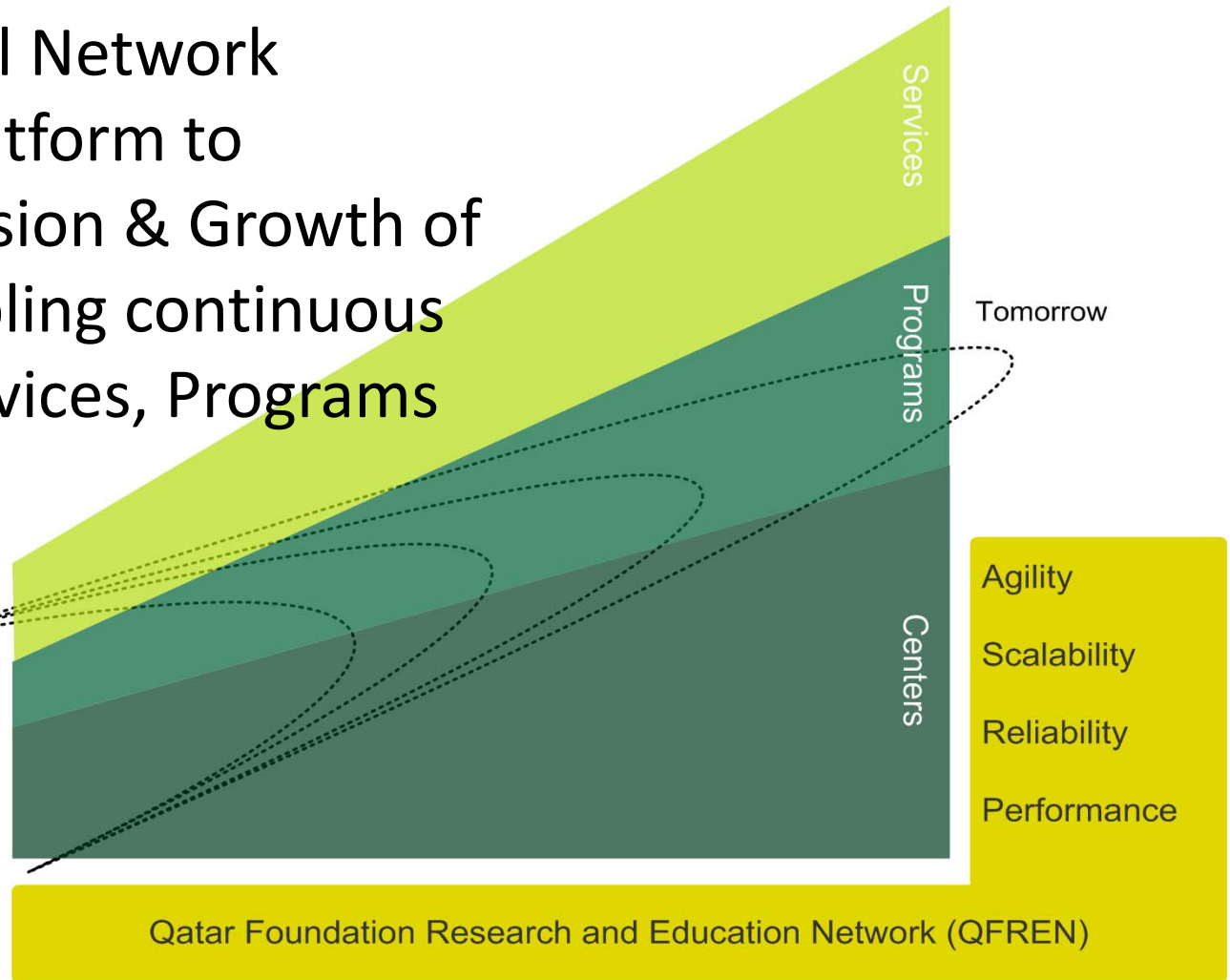


# QF Research & Education Network

A Foundational Network  
Technology Platform to  
support the Vision & Growth of  
QF whilst enabling continuous  
delivery of Services, Programs  
& Centres.

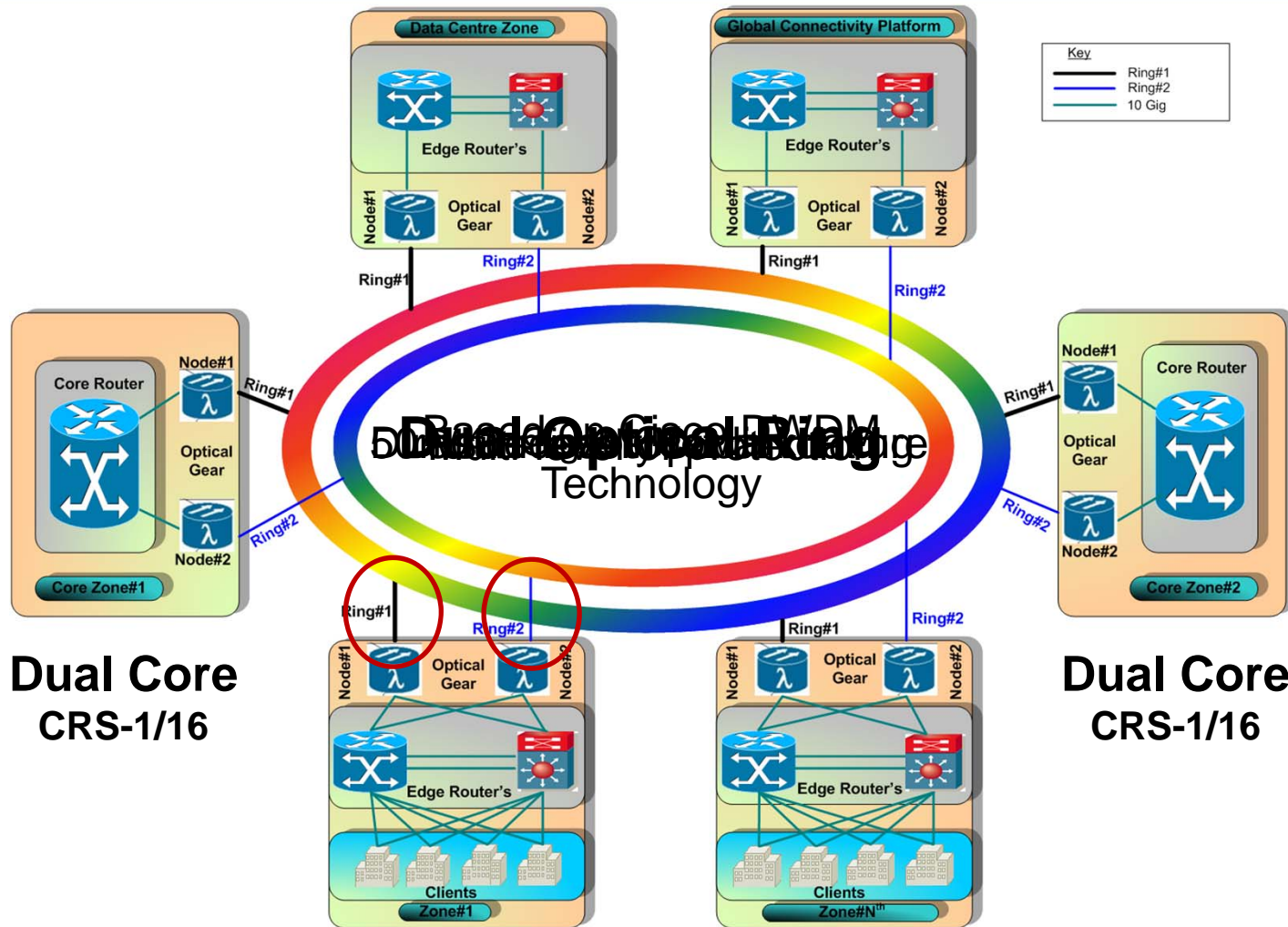


Today





# A Cutting-Edge Technology Platform

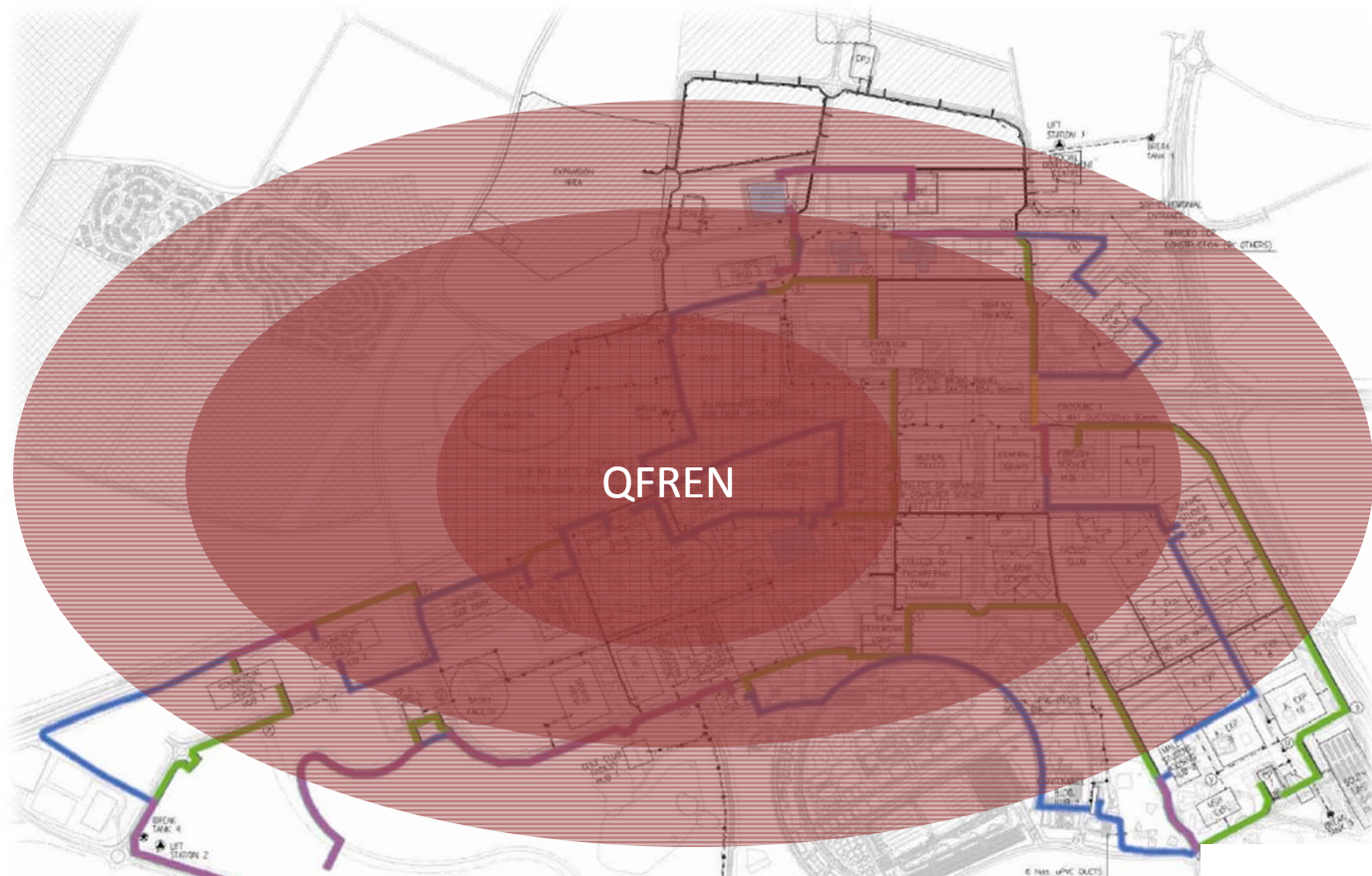


**Dual Core  
CRS-1/16**

**Dual Core  
CRS-1/16**



# QFREN Benefits



Scalability



Agility



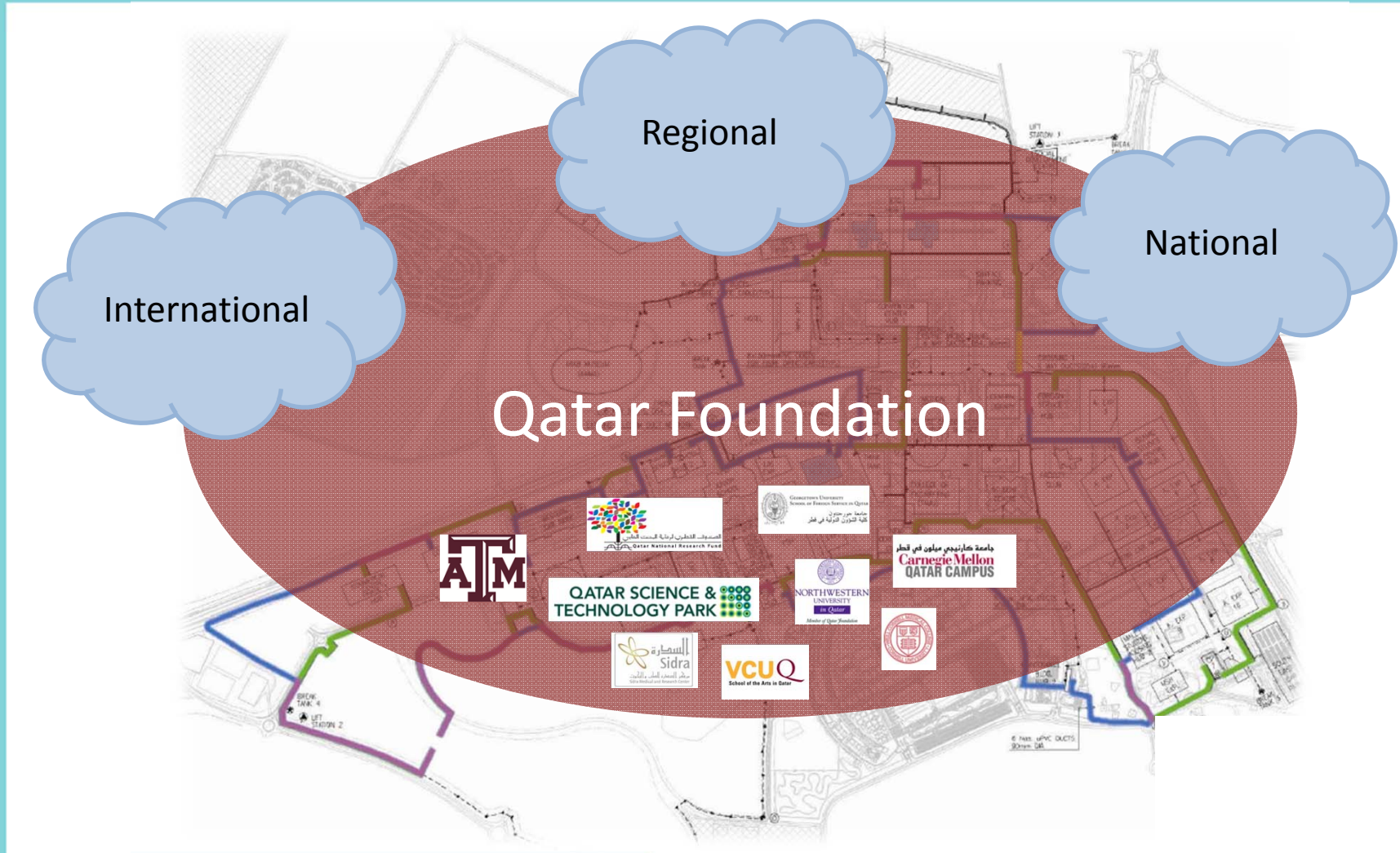
Reliability



Performance



# Collaborative Model





## Main Challenges ...

---

- REN is not new in many other countries, However, it new to this region.
- Building REN from technical side could be the easiest part, operating and maintaining it could be a big a challenge.
- Governance is very important:
  - Policy and Decision Making
  - REN is not an IT initiative
  - Funding and continuous investment





# Thank You



كؤؤؤؤؤؤؤؤ  
*Qatar Foundation*

**Sa'di M. Awienat**

IT Director

Qatar Foundation

Email: [sawienat@qf.org.qa](mailto:sawienat@qf.org.qa)

PO Box 5825 Tel: 4540653

[www.qf.edu.qa](http://www.qf.edu.qa) [Info@qf.org.qa](mailto:Info@qf.org.qa)