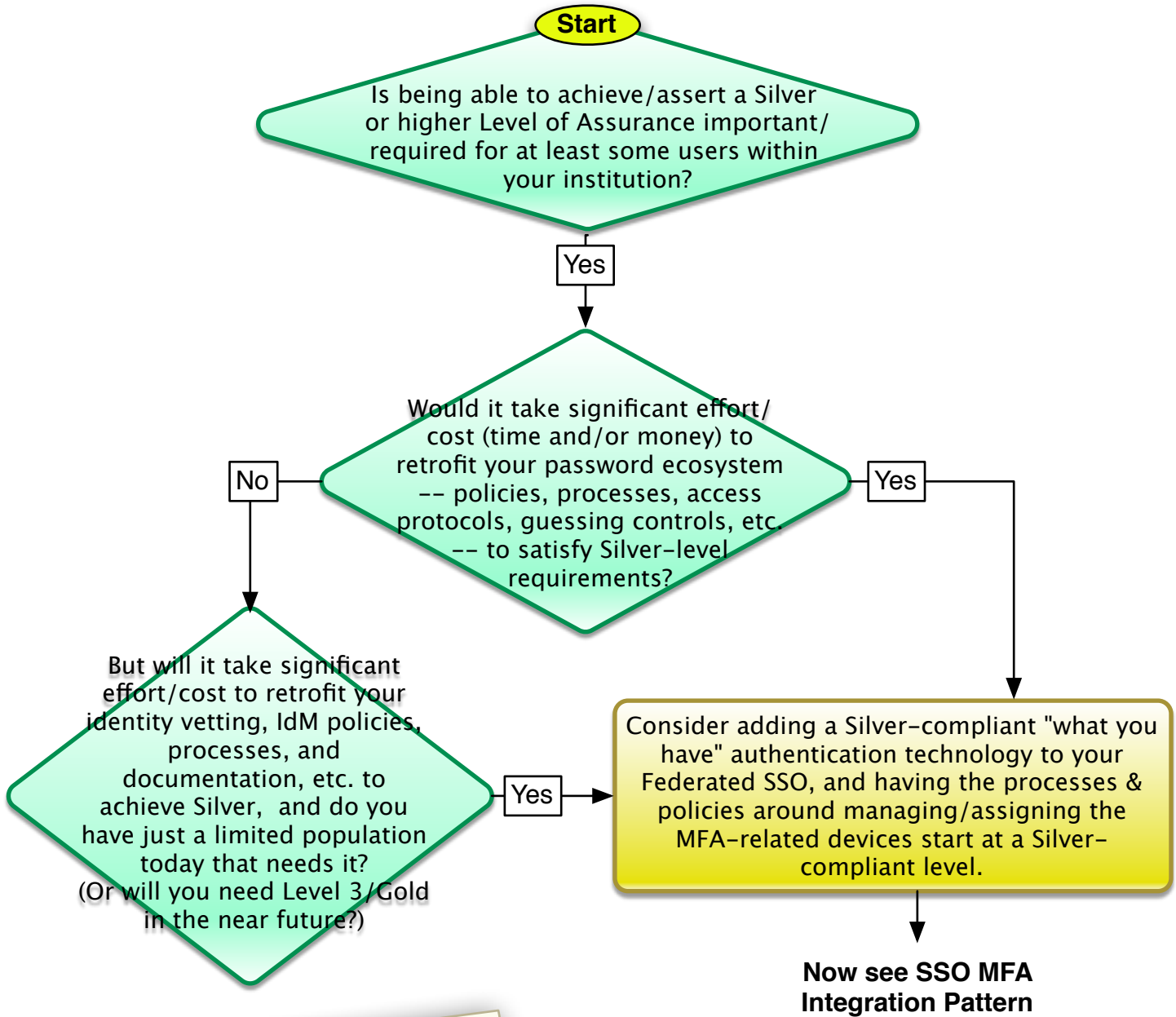


Achieve Assurance Level MFA Decision Tree



Advantage to institution: start getting the concept out in front of some of your users, the ones with the highest assurance requirements. This will also begin to build institutional capabilities to support, so basics are there for expanded MFA when needed.

Note that when Level 3/"Gold" becomes important to you, you may ultimately need to have your password credential satisfy the Level 2 criteria for a password, if intended to be one of the "multi" factors.