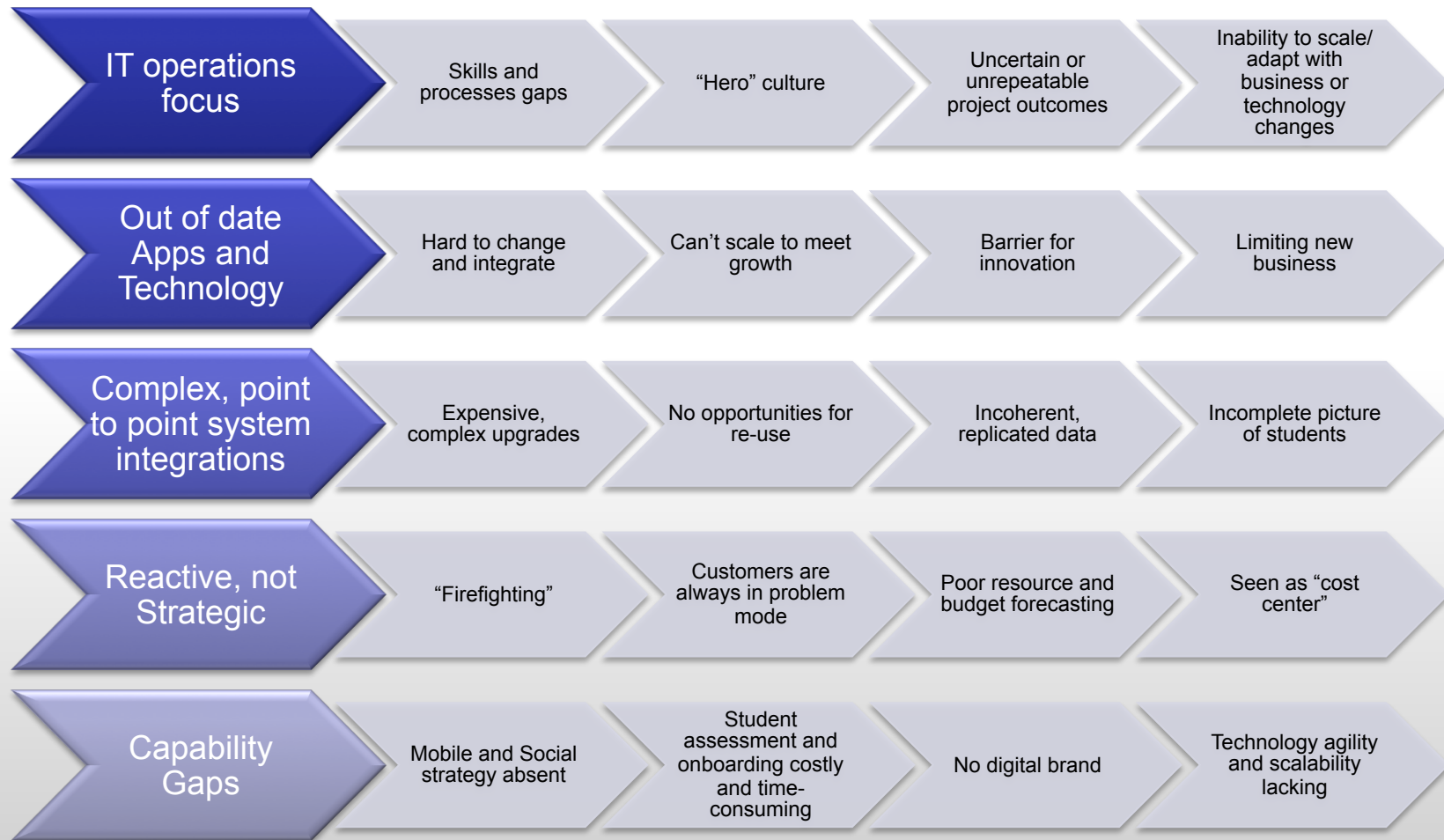




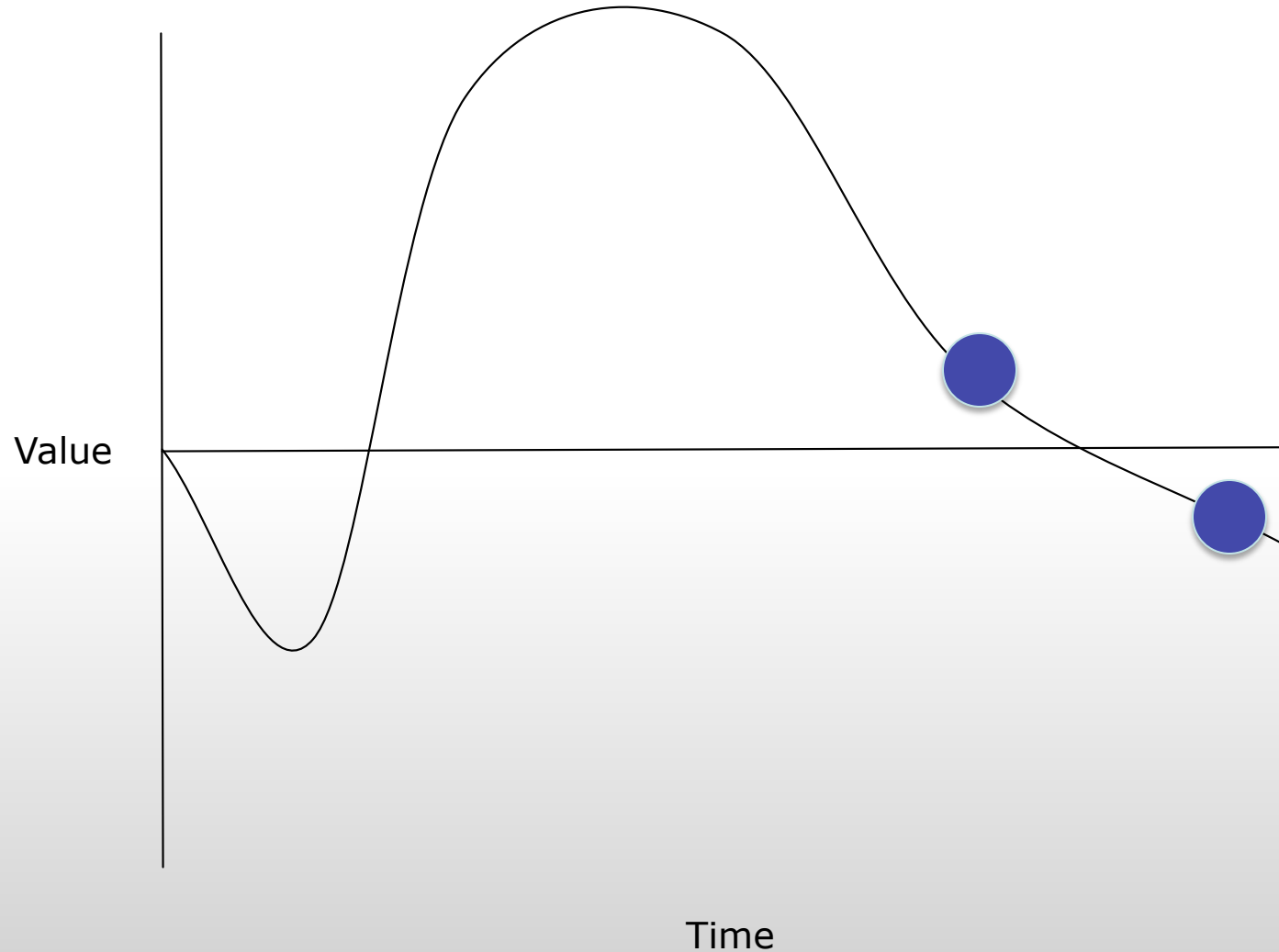
Capability Roadmaps at UMUC

Rich Stevenson
AVP, Enterprise Architecture

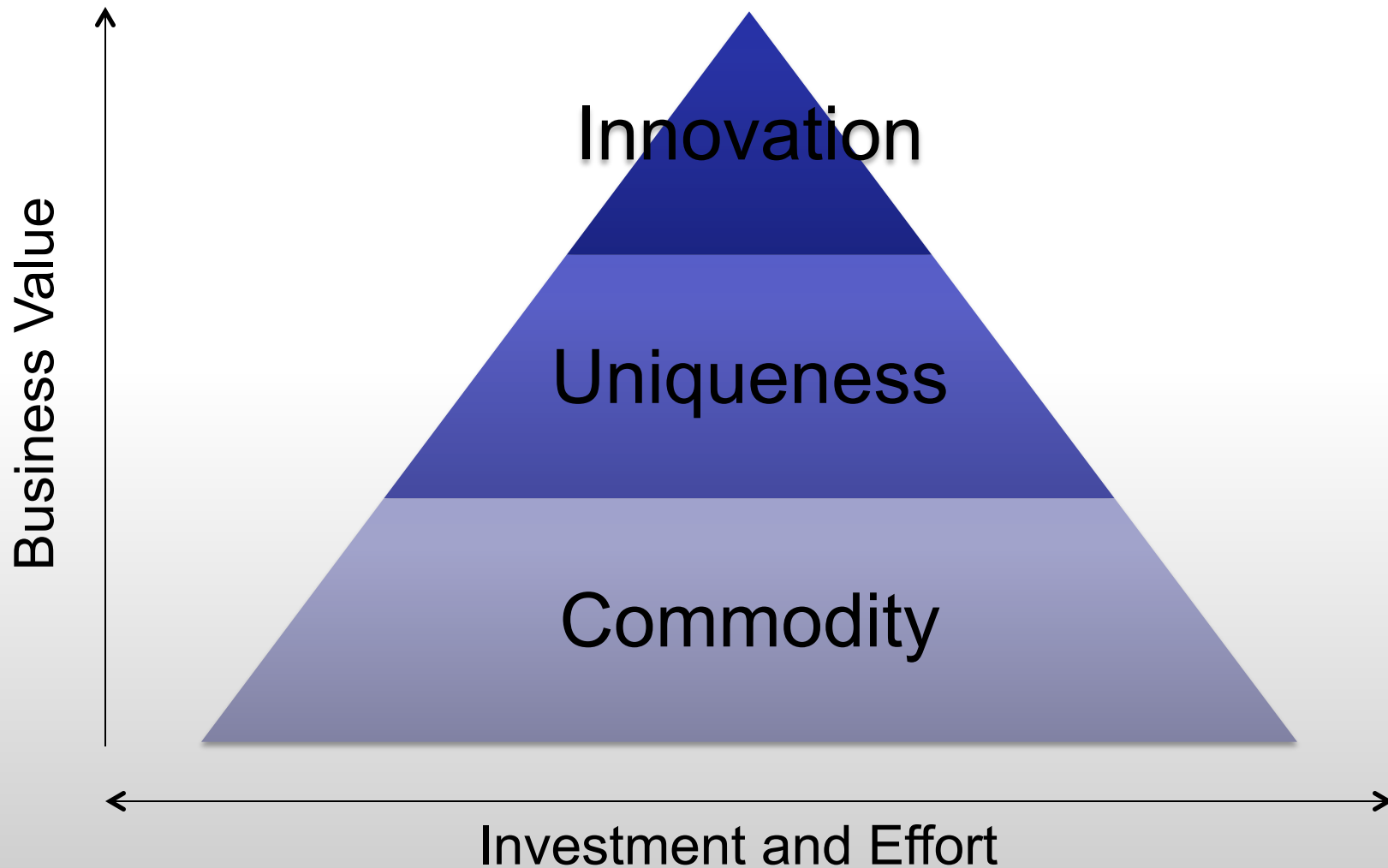
Challenges and Constraints, circa 2010



Technology Investment Life Cycle



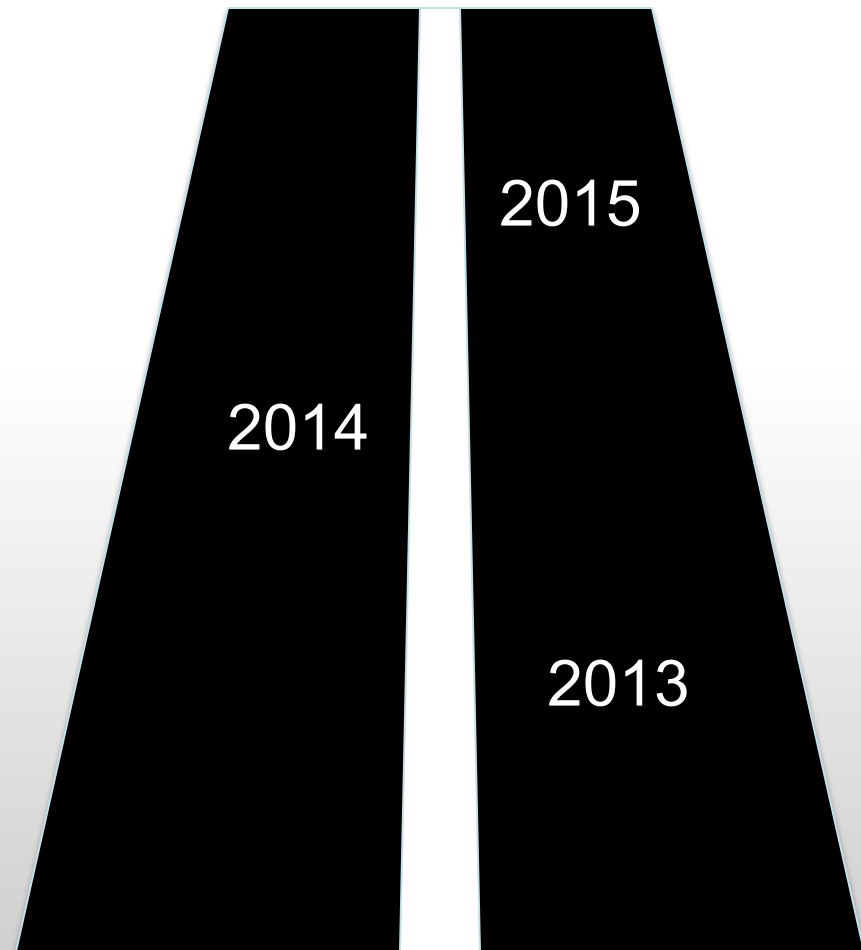
Historical Technology Investment



Enter Enterprise Architecture



- IT Strategic Enabler
- Drive Value
- Align Technology Spend With Business Goals
- Spend Visibility



UMUC Architecture Domains



Academic

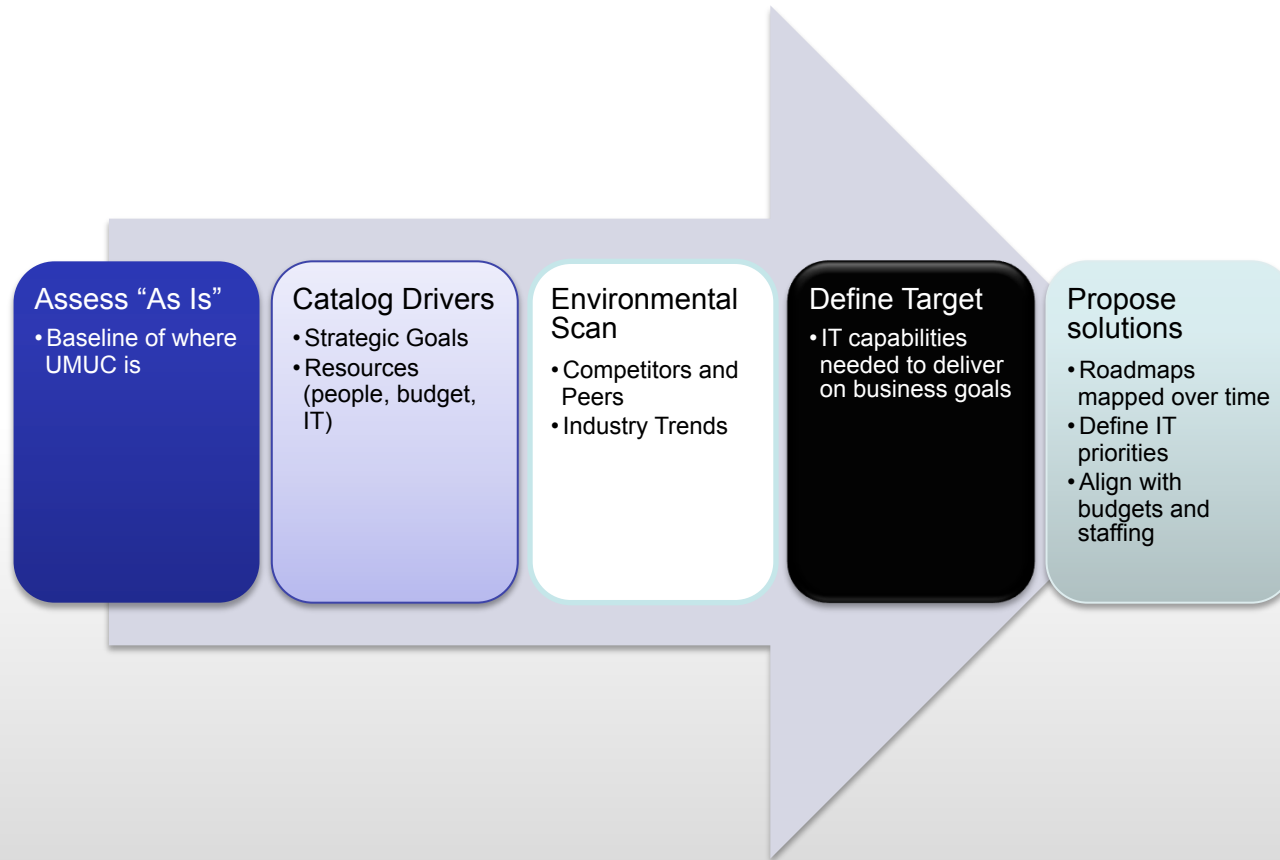
Academic
Administration

Foundational
Technology

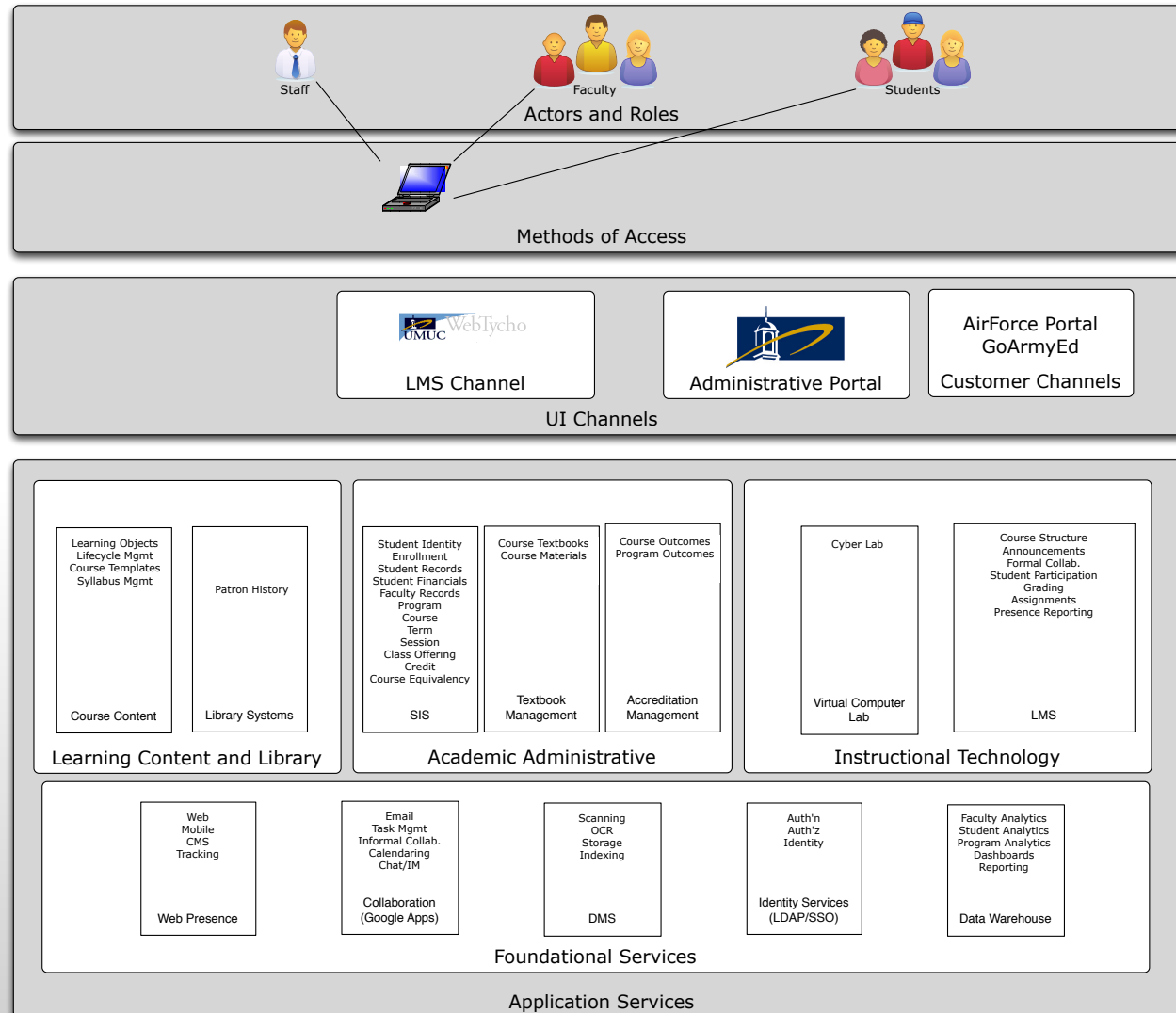
Partnerships Marketing
and Enrollments

Administrative

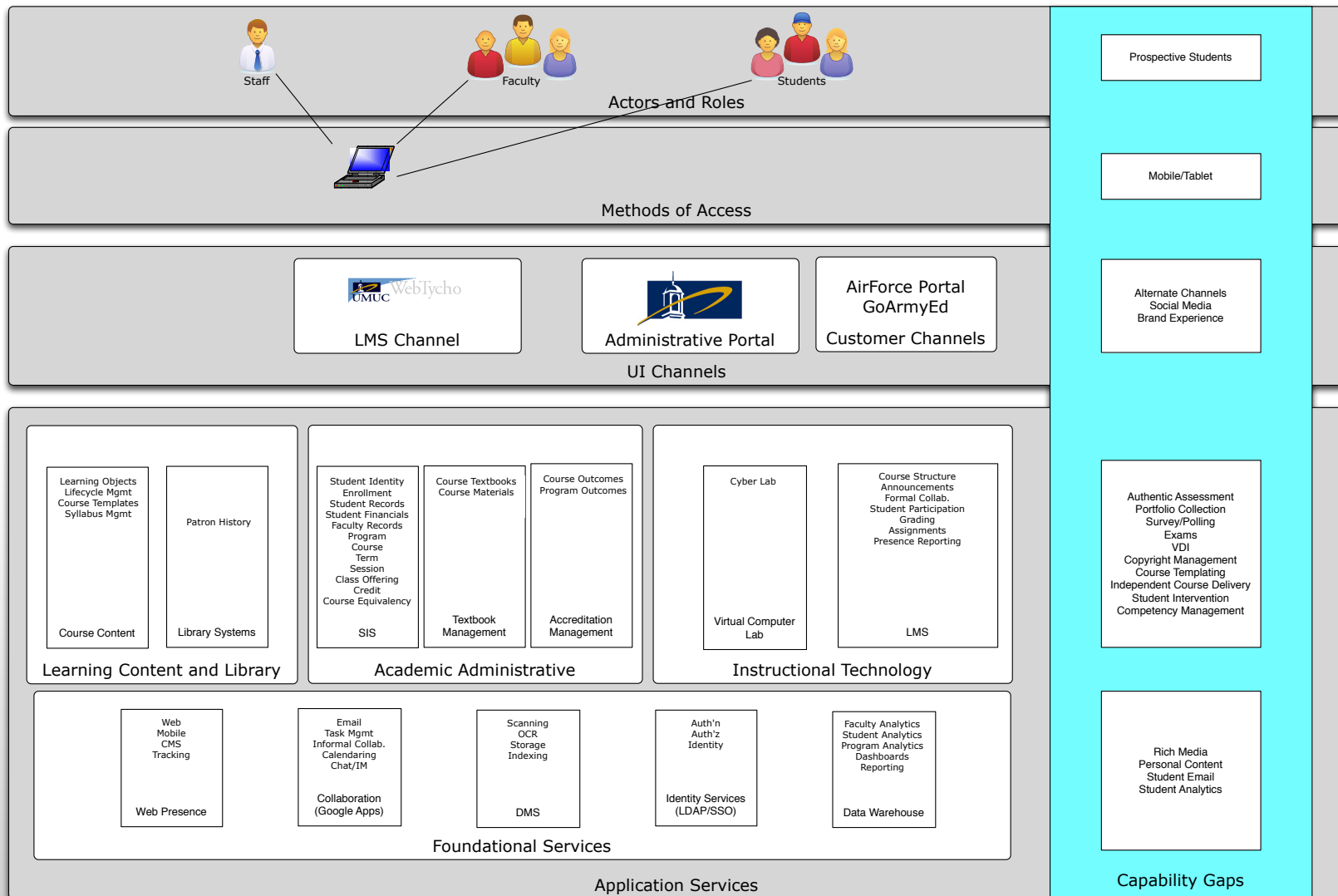
Capability Roadmapping Process



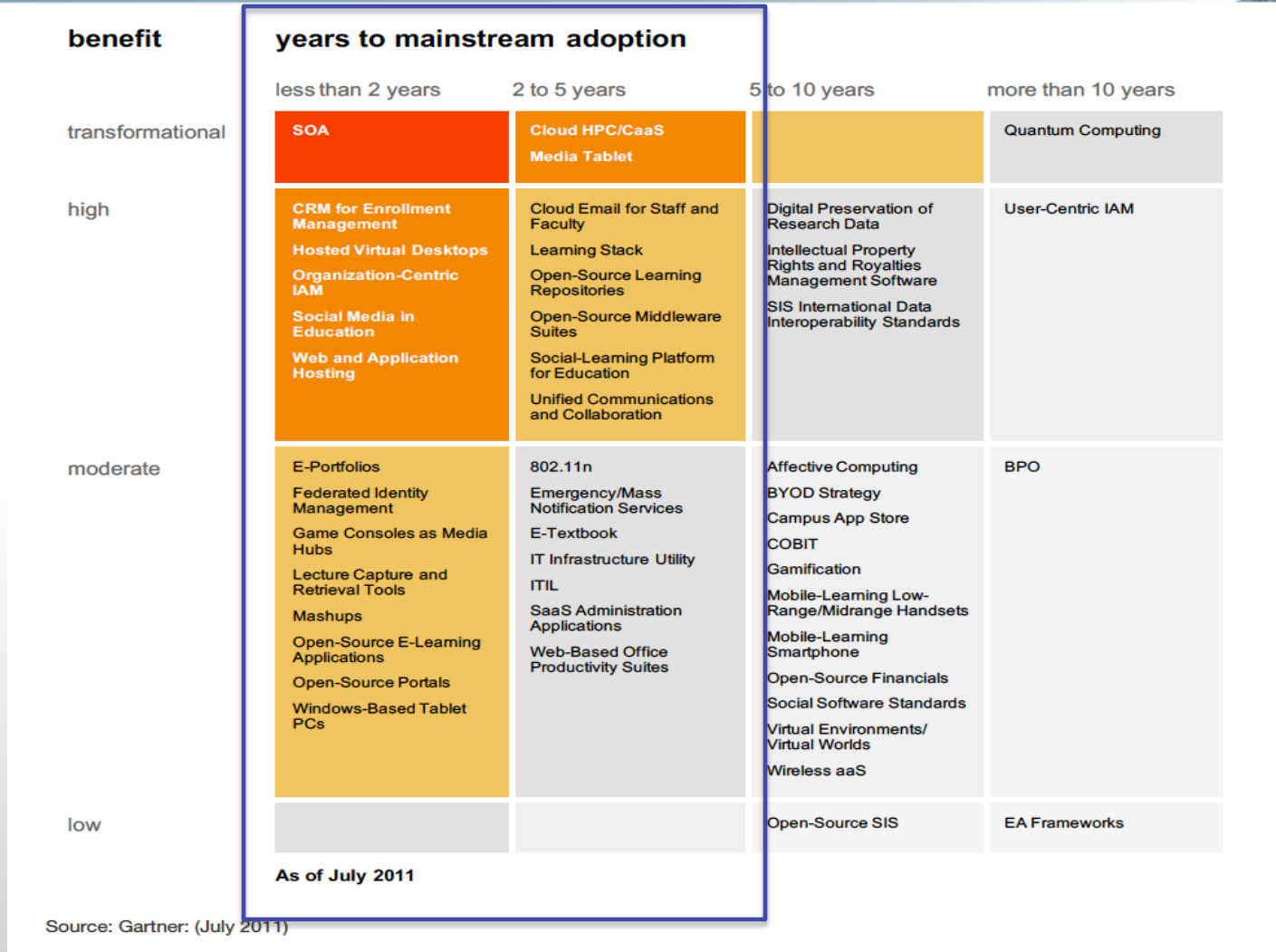
Baseline



Baseline and Gaps



Environmental Scan



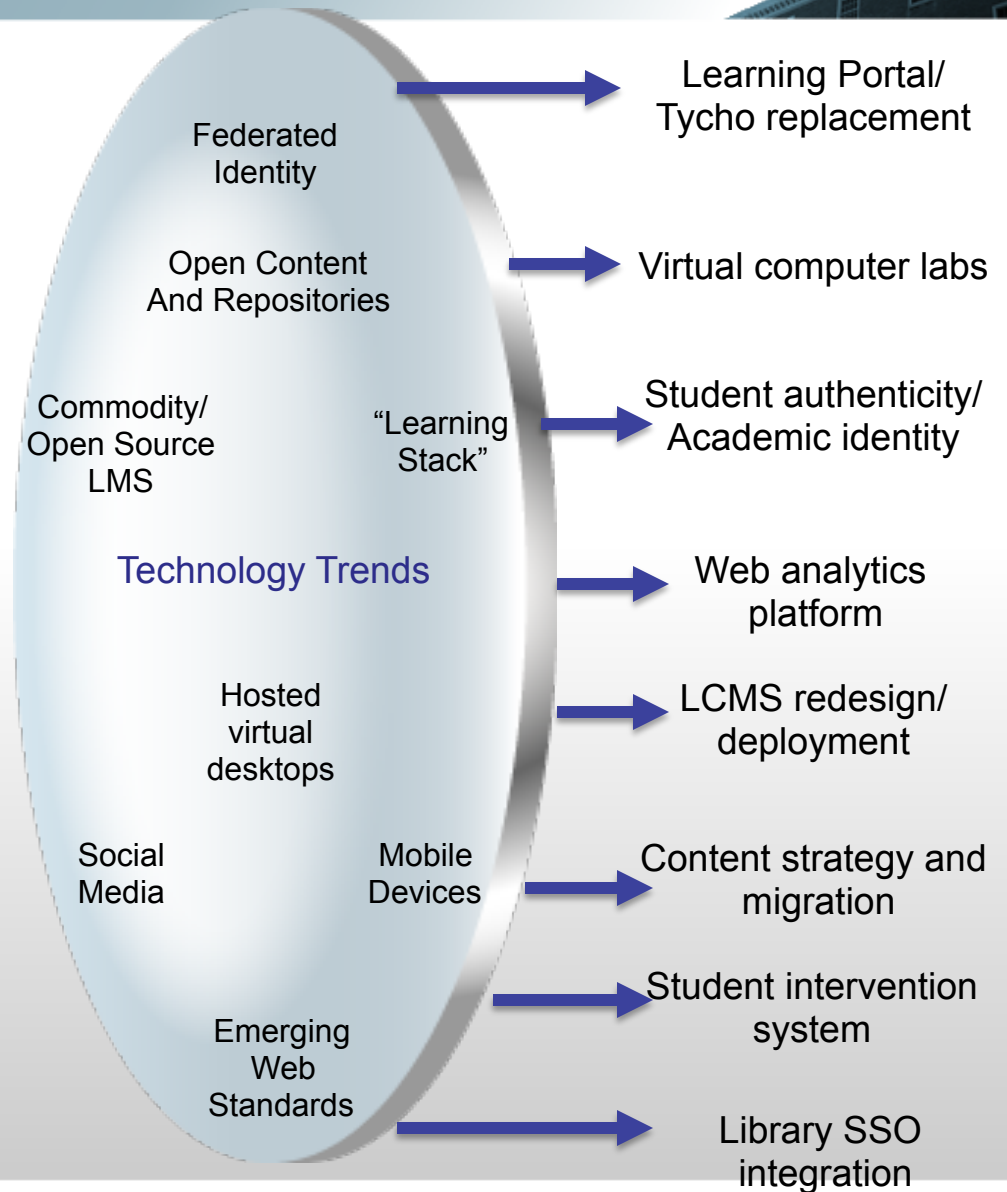
Gartner Hype Cycle for Education

Strategies, Trends and Initiatives

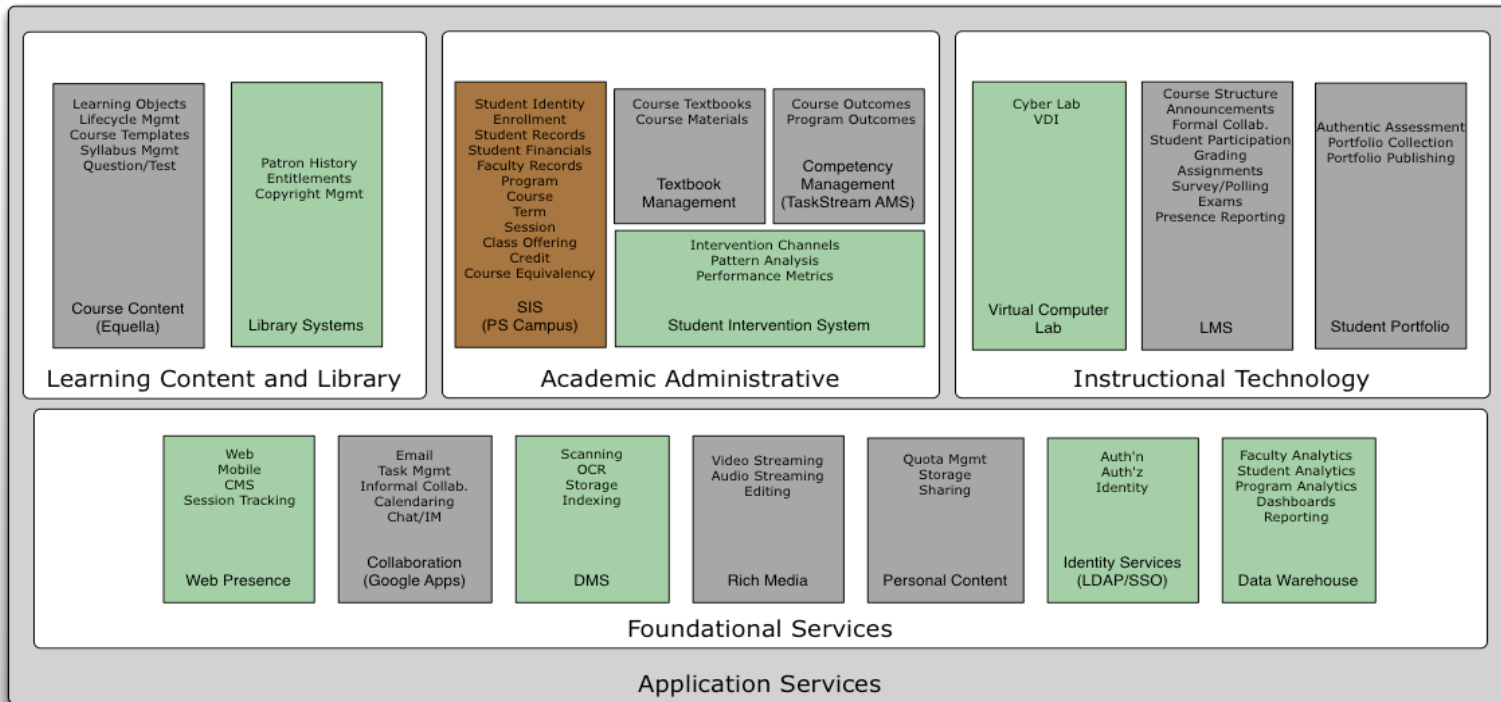
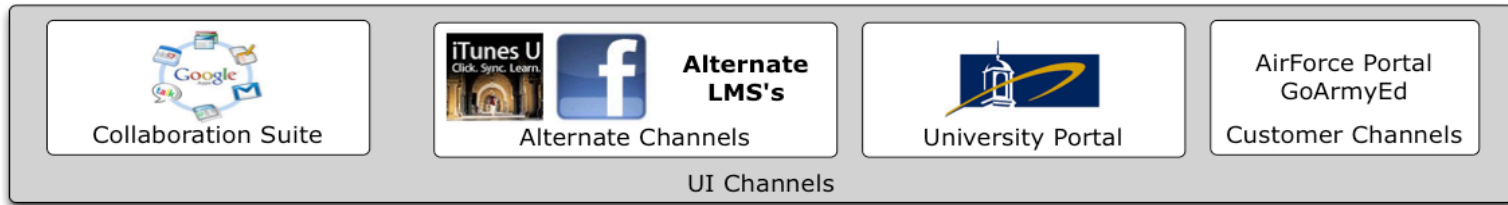
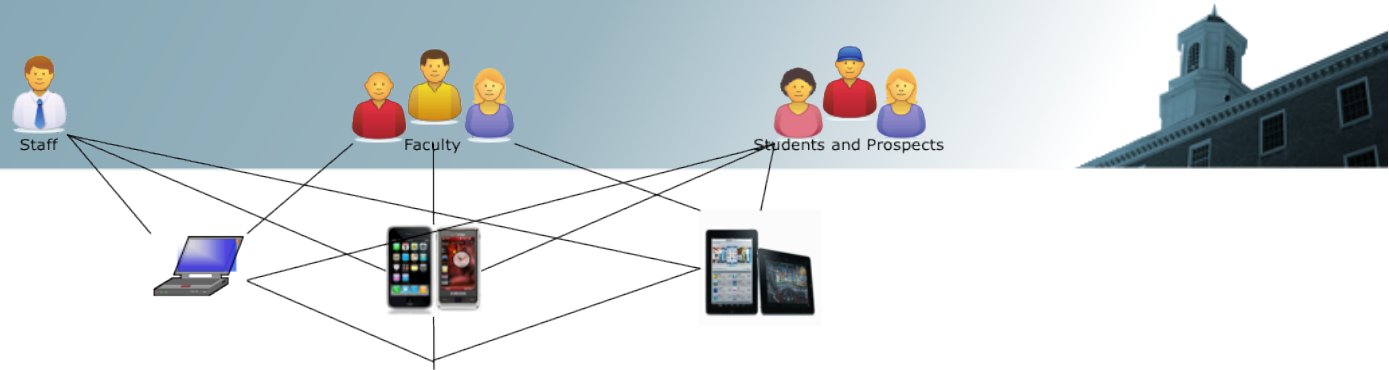


Strategies

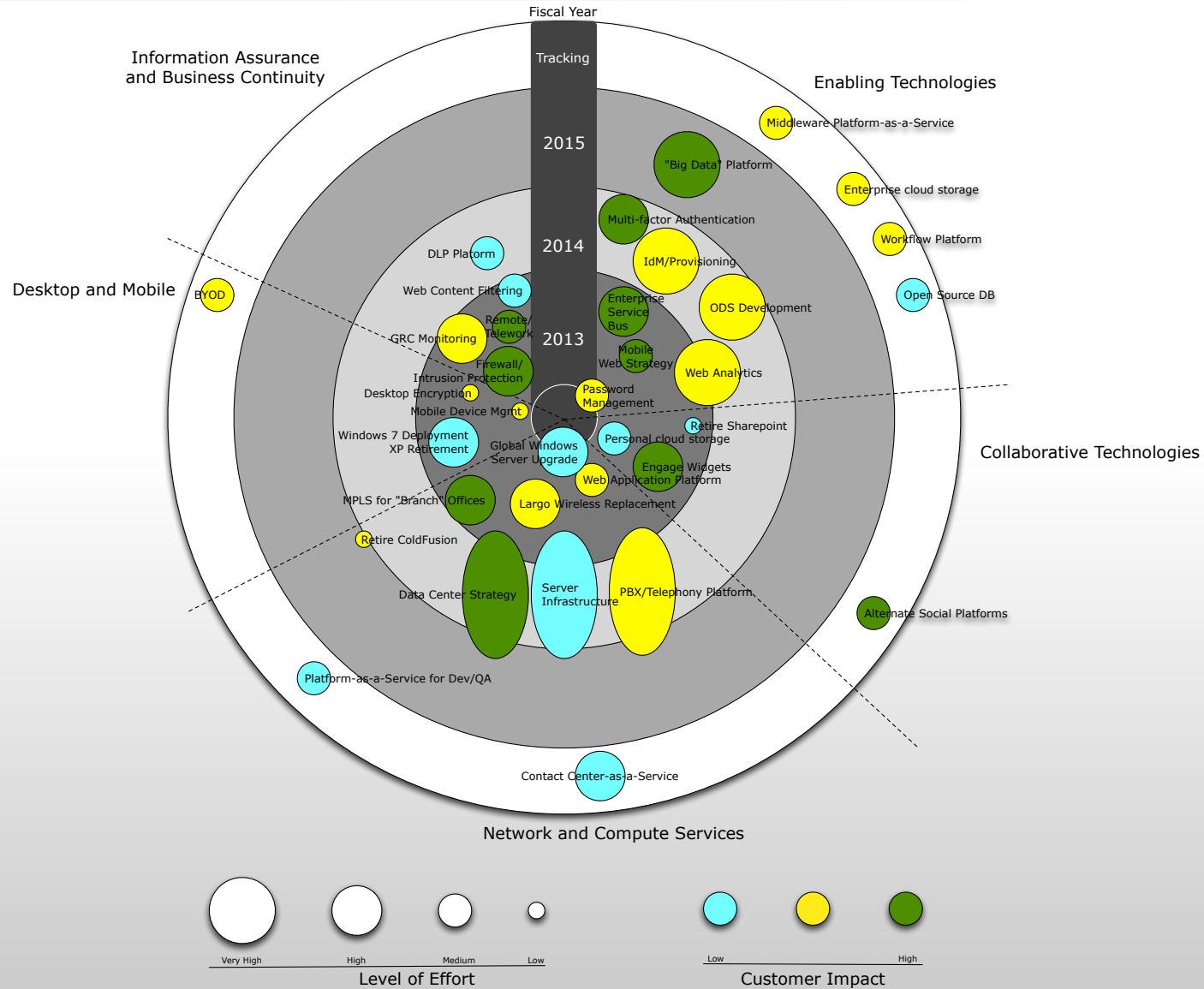
Student success through analytics
Market leading online learning
Flexible delivery models
Agile business processes
Reduce barriers to success



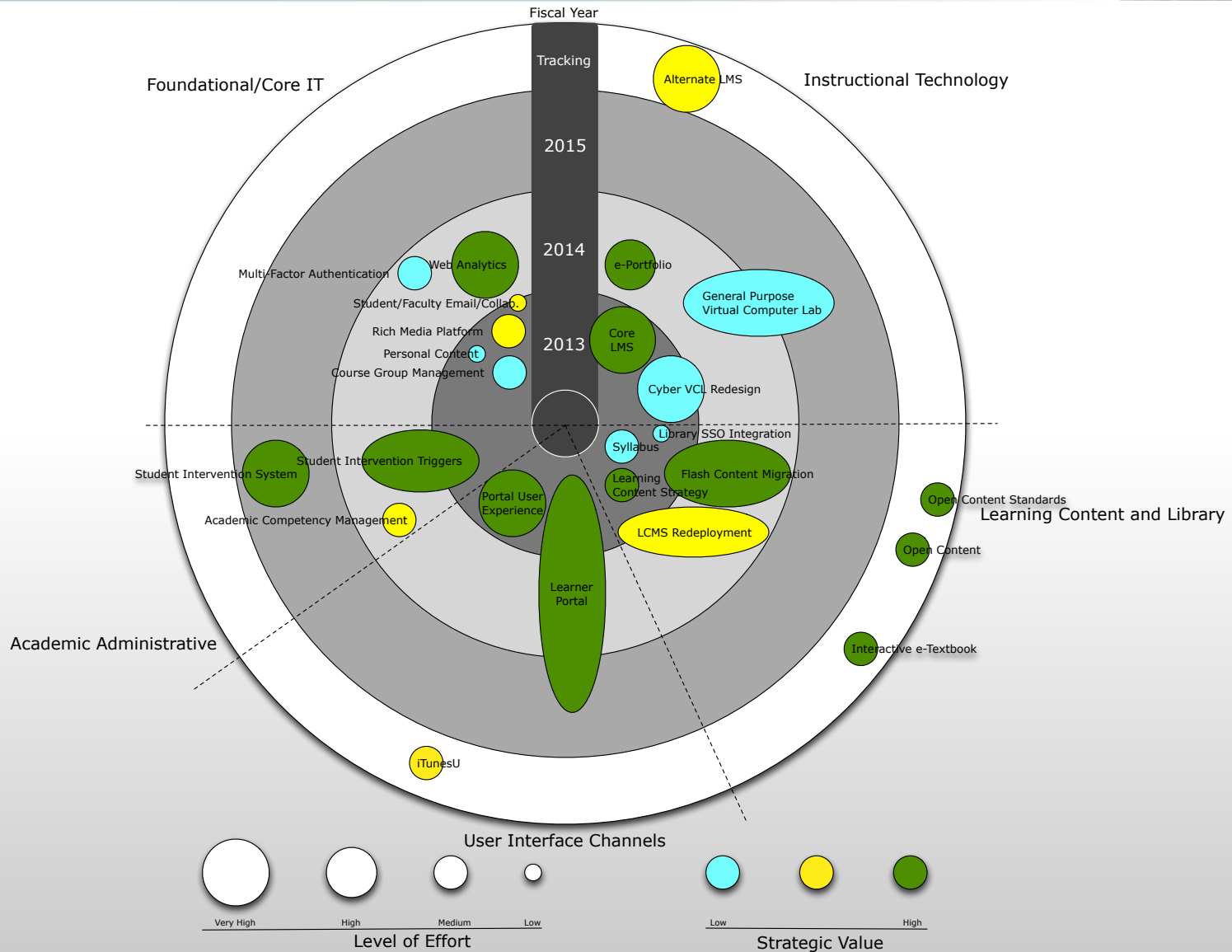
Target



Foundational Technology Roadmap



Academic Capabilities Roadmap



Roadmap Costing



- Cost Estimates $\pm 50\%$
 - Less outer year certainty
 - Enterprise Architecture Practice Metric
- Startup Costs
 - Investment Account Funding

Early Results



- Initiative Songbook
 - Funding Certainty
 - Prioritization
- Decrease in “Side Door” IT Projects
- Clearer Scope for PMO Initiatives

Thank You



Contact Info

rich.stevenson@umuc.edu

<http://www.educause.edu/members/richmond-stevenson>

<http://www.linkedin.com/in/richmondstevenson>