



TRUST AND IDENTITY

TIER Campus Success Program: In Person FAQ

August 3, 2017
Ann West,
AVP Trust and Identity, Internet2

What is TIER?

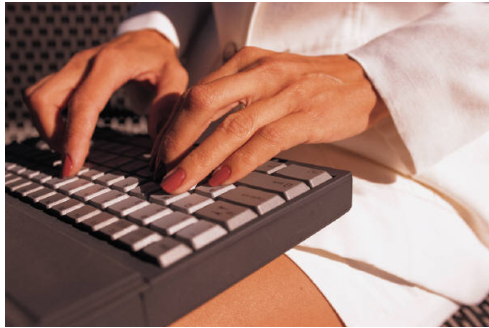
Trust and Identity in Education and Research (TIER)

is an organizational Identity and Access Management platform that provides:

- Community-driven requirements, professionally developed, open source.
- Good practices approach
- Federated identity, attribute, and access management system and builds on more than a decade of community work
- API to plug-n-play with other commercial or homegrown solutions

The Story

Faculty Member



Collaborates
with

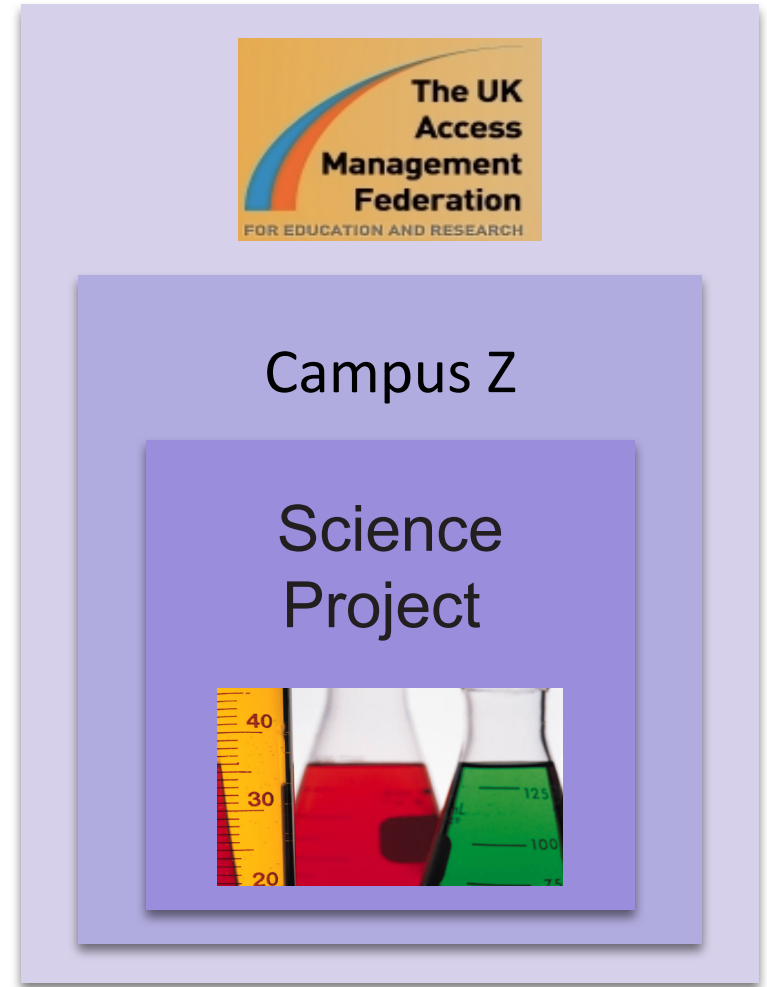
Collaborative
Science Project
in UK



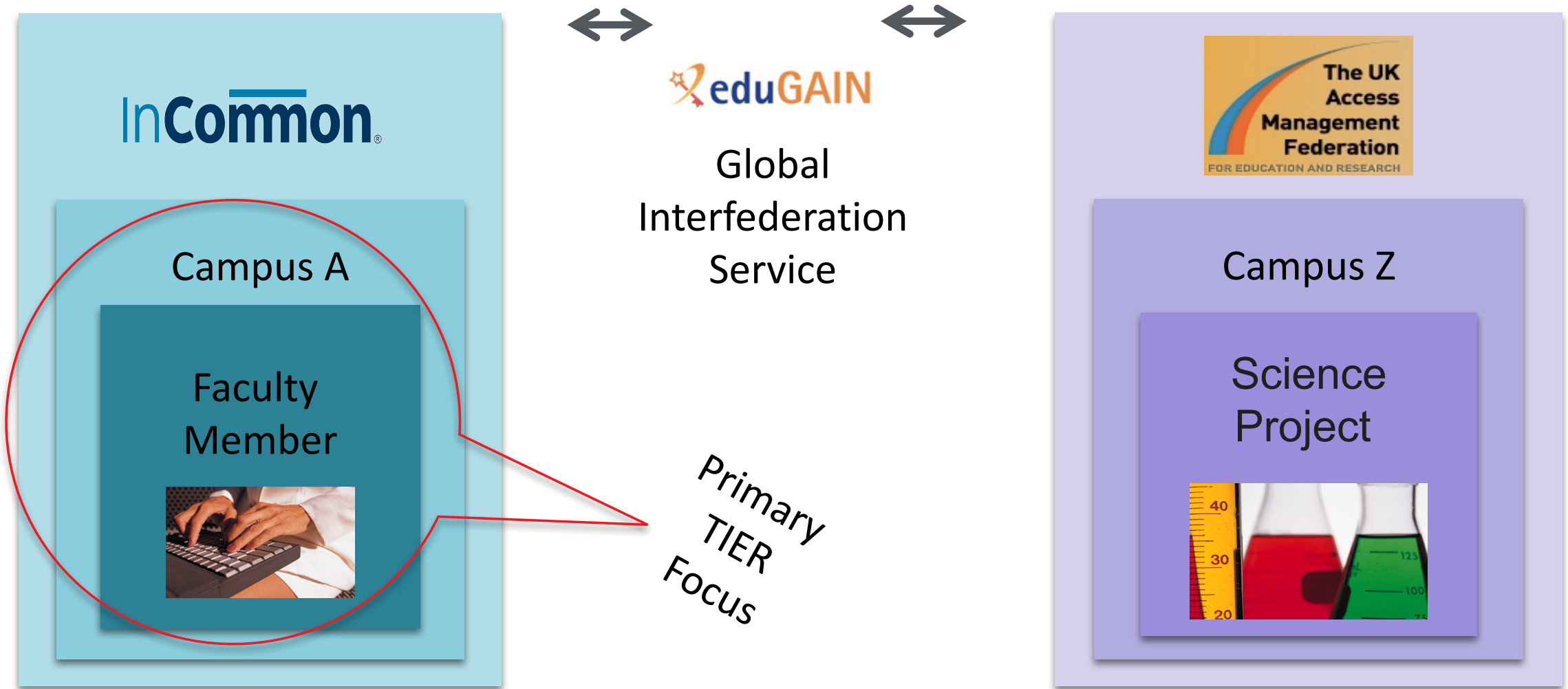
How it Works



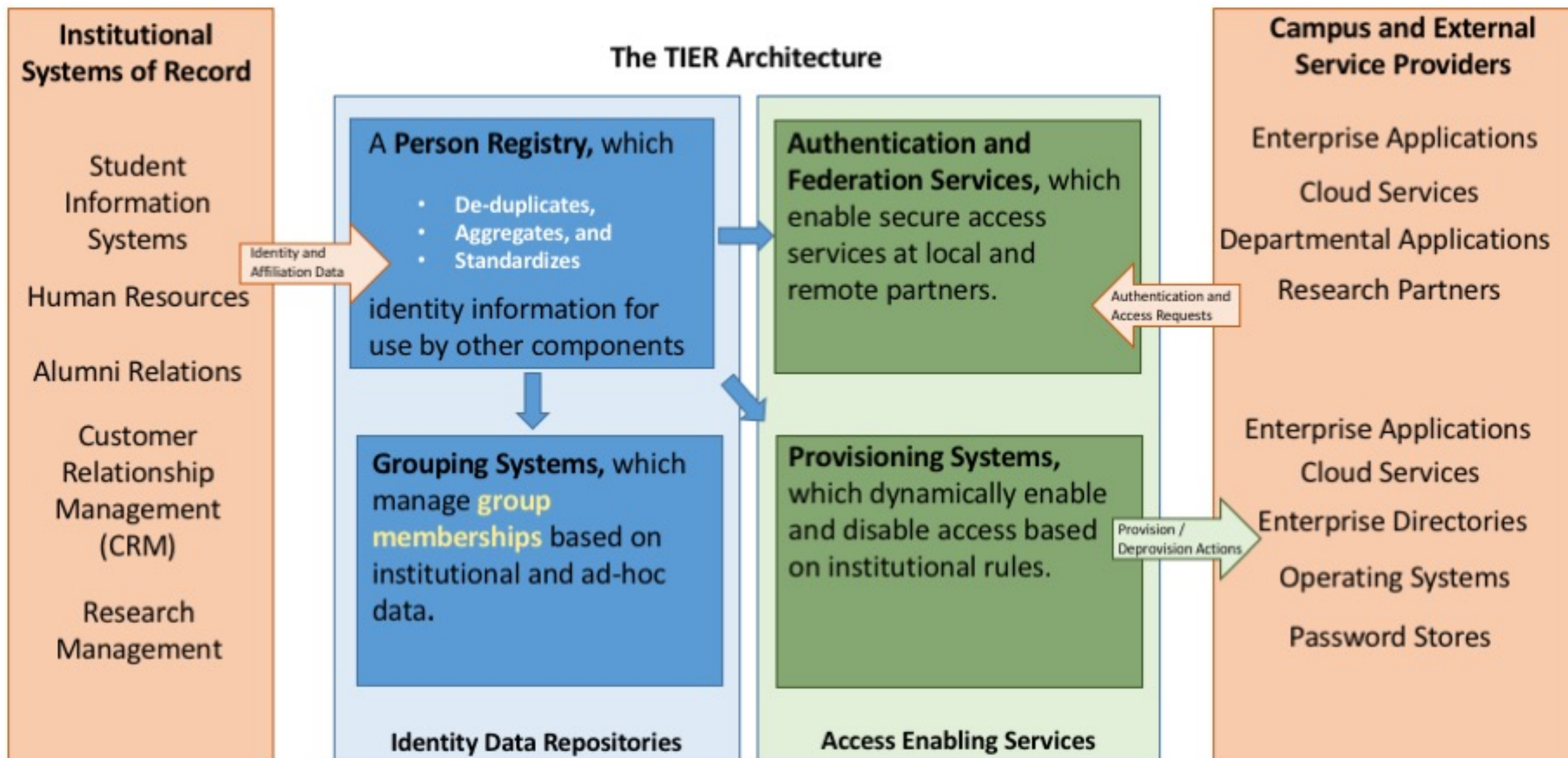
Global
Interfederation
Service



How it Works



The Business Context For TIER



What are the TIER Components?

Containerized versions of:

- Entity Registry
 - midPoint (To be integrated in this fall)
 - COmanage Collaboration Management Platform
- Authentication and Federation Services
 - Shibboleth Federating Software
- Grouping Systems
 - Grouper Access Management Software
- Provisioning Systems
 - All of the above



TIER Adoption Cohort

- Identified requirements in 2015
- Surveyed 49 Investors this Spring
- Top Request? Provide implementation and transition guidance
- TIER Community Investor Council recommended adoption activity



TIER Campus Success Program

- Accelerating campus adoption
- Assisting campuses in the successful deployment of TIER-packaged components
- Providing lessons learned for the next adopters
- Informing the TIER program

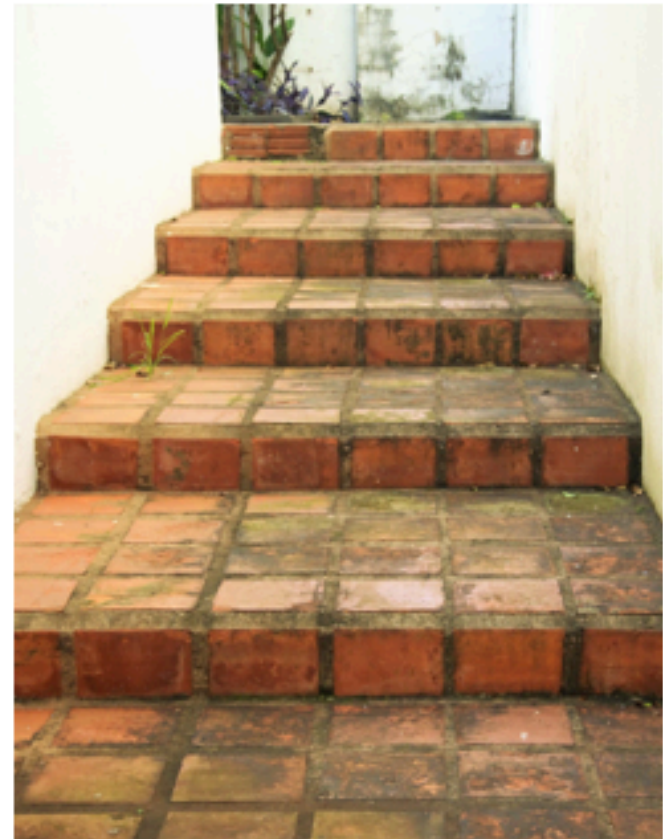


TIER Campus Success Program: Who Can Apply?

US Higher Education institutions

- Have a diverse mission, deployment solutions and challenges to solve
- Contribute to the community
- Intend to adopt at least one TIER-containerized component
- Commit to one year

Preference to investors but diversity of cohort is key



My Company Wants to Participate

Great! Campuses must apply but corporate providers...

- Looking to support TIER can
- Partner with a campus to participate

Feedback from implementation providers and case studies including corporate support is key



What Would My Campus Be Doing?

- Implement TIER component(s)
- Share findings on bi-weekly calls. Support your cohort!
- Publish lightweight summaries for your community followers
- Learn about TIER
- Present on your findings.
- Publish final report and artifacts at the close of the year.
- Provide feedback along the way



What Would TIER be Doing?

- Program coordination
- Planning workshop
- Technical training
- Bi-weekly calls, collaboration & publishing tools
- Access to identity subject-matter experts



What's on the Test?

- Project Description
 - Summary, Organization info, target TIER components, anticipated training/help
- Project Support and Personnel
 - CIO support, implementation staff and partners.
 - Demonstrate commitment
- Supporting Materials (optional)



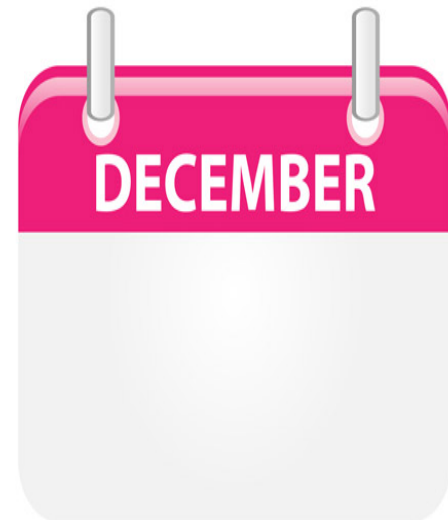
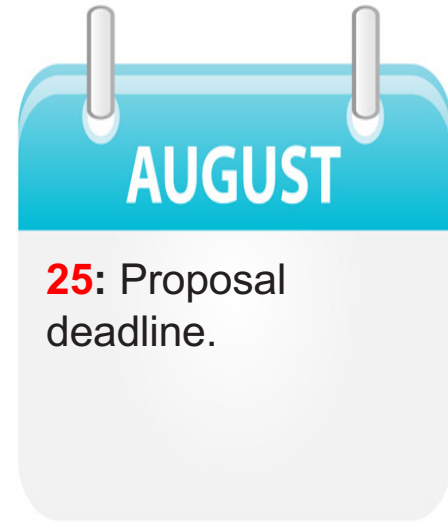
Who Decides?

TIER Community Investor Council and Internet2 will

- Review the proposals
- Choose the final participants based on TIER components to be implemented, diversity of program participants, and overall strength of proposals



2017 Key Dates



Questions?

- Erin Murtha
emurtha@internet2.edu
- Ann West
awest@internet2.edu

