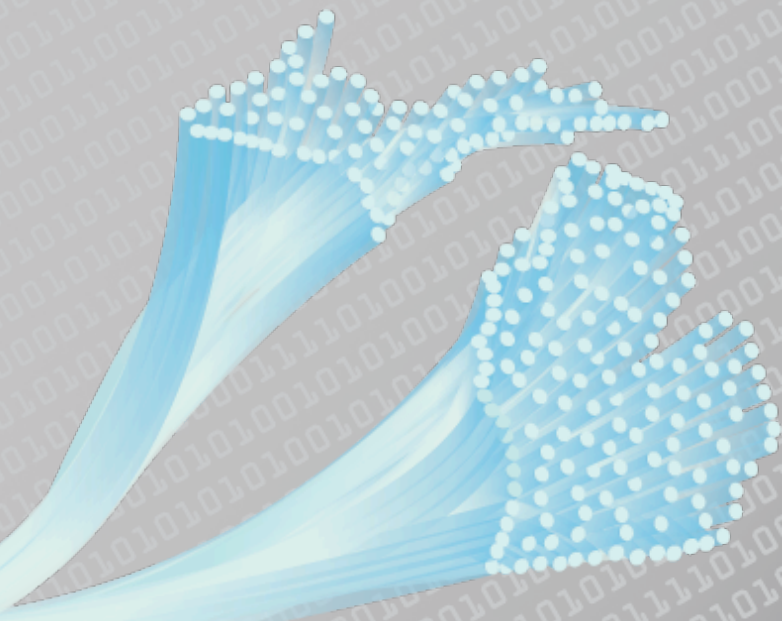


Michigan's FCC Rural Health Care Pilot Program

Jeff Shaw

jshaw@mphi.org

<http://fcc.mphi.org>



Michigan's "Pilot" Program

- 540 Health Care Sites
 - Hospitals
 - Clinics
 - Local Health Departments
 - Community Mental Health Centers
 - Tribal Health Centers
- 75 Counties
- Over 4 million people



Area of Focus



Network Approach

- Adaptive – scalable for future
- Affordable – most economical connection type used, lowest ongoing cost for sustainability
- Reliable – network backbone is designed to redundant and resistant to failures, built with mature and reliable technology and equipment
- Secure – high encryption VPNs to protect information on the network
- Tiered – bandwidth model based on size of facility and its role in the network

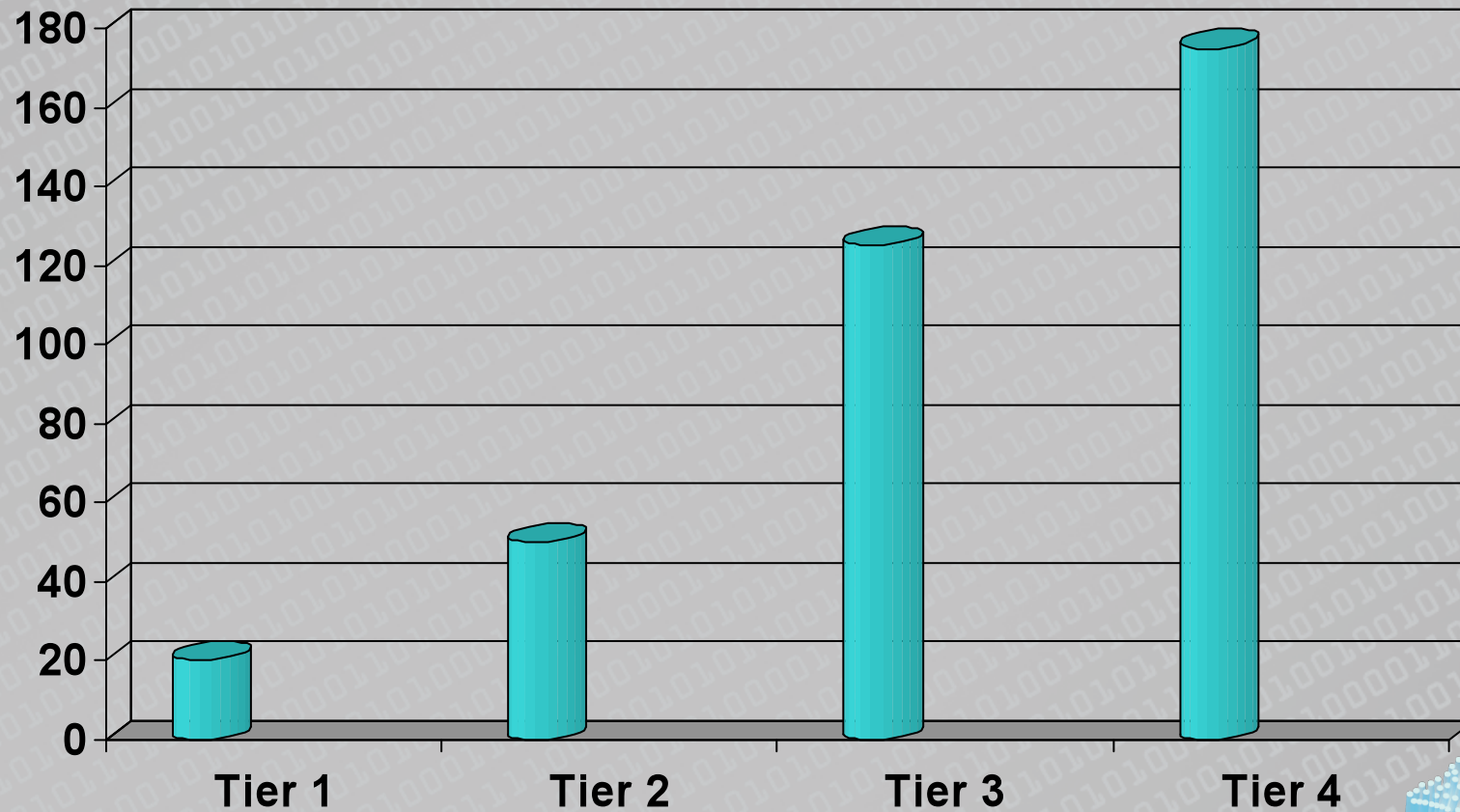


Levels of Connections

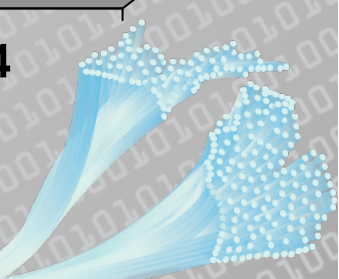
- Tier 1 – Large Regional Referral Hospitals
 - Connection capable of 1Gb
- Tier 2 – Other Hospitals
 - Connection capable of 45Mb
- Tier 3 – Large Clinics
 - Connection capable of 10Mb
- Tier 4 – Clinics
 - Connection capable of 1Mb



Sites by Tier - Planned

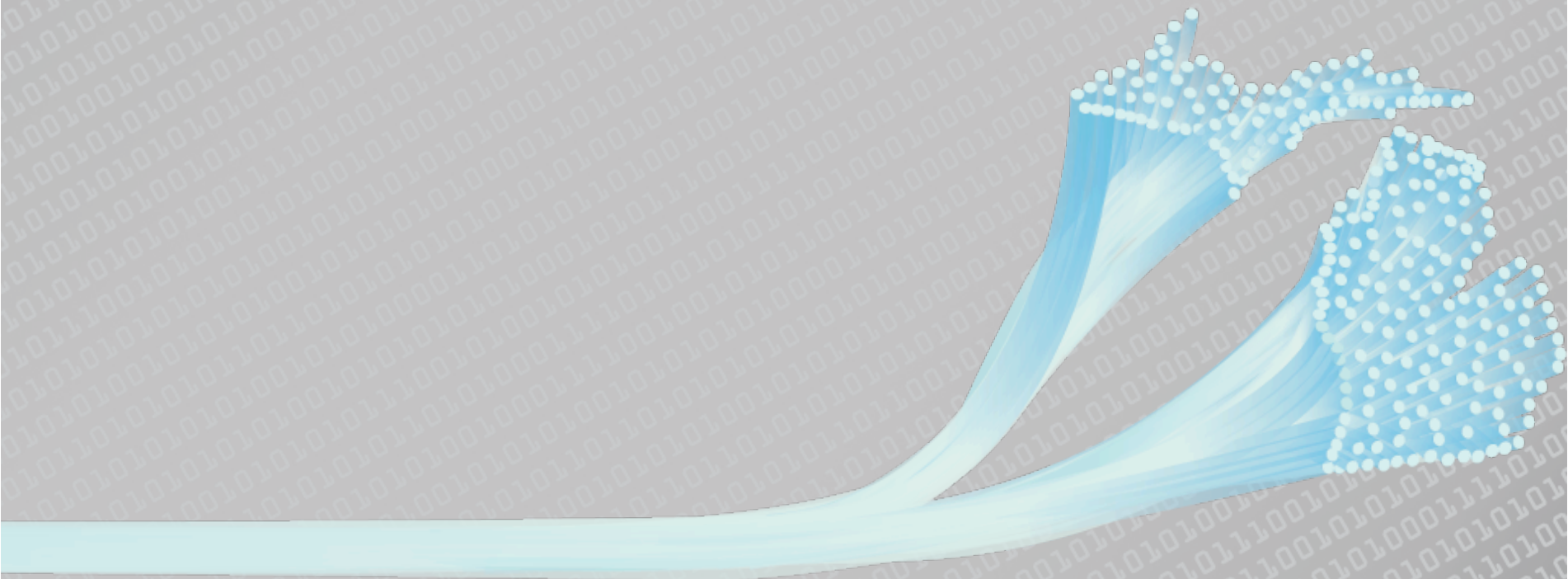


Approximately 390 Sites

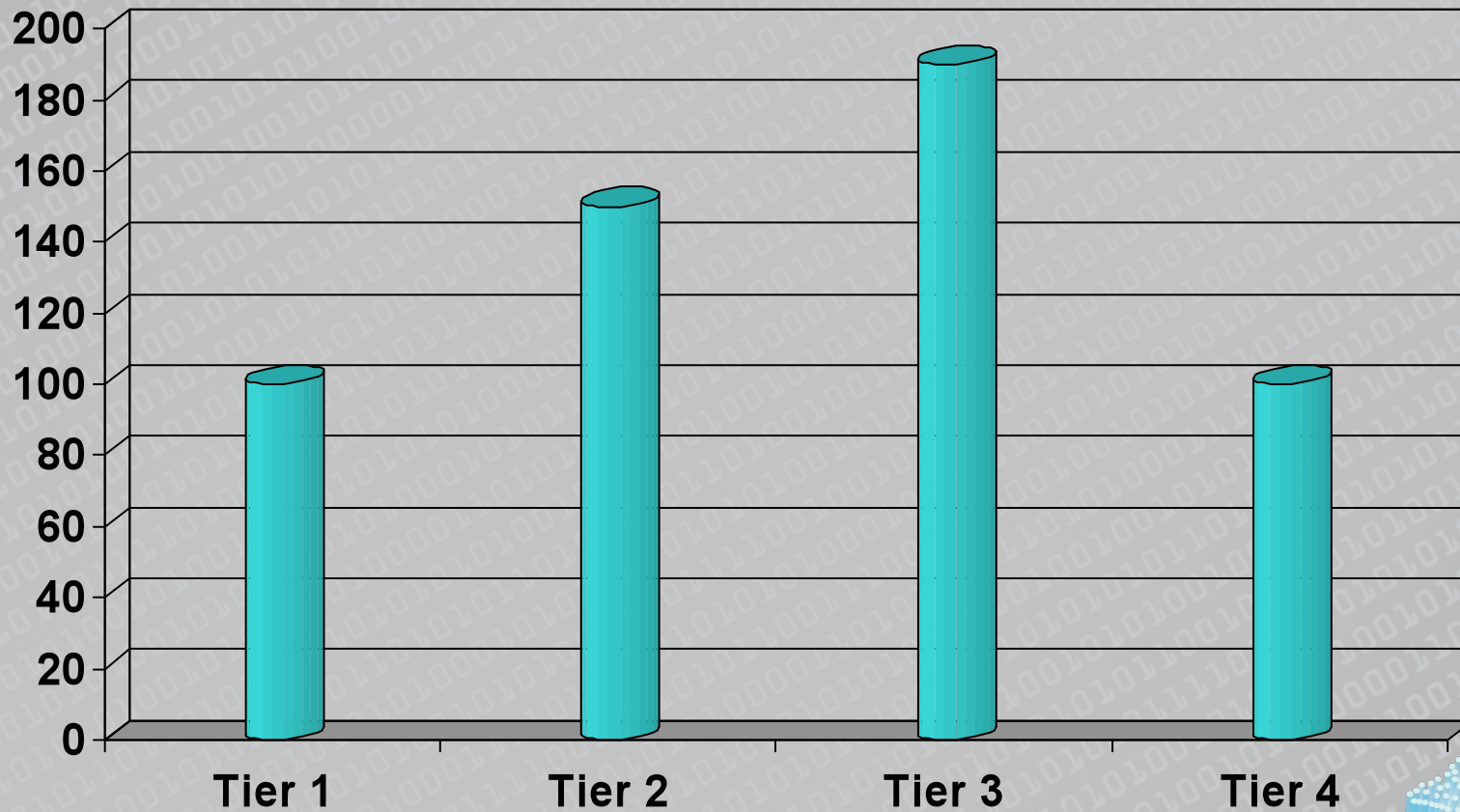


Challenge 1

Where did all these sites
come from?



Sites by Tier - Actual

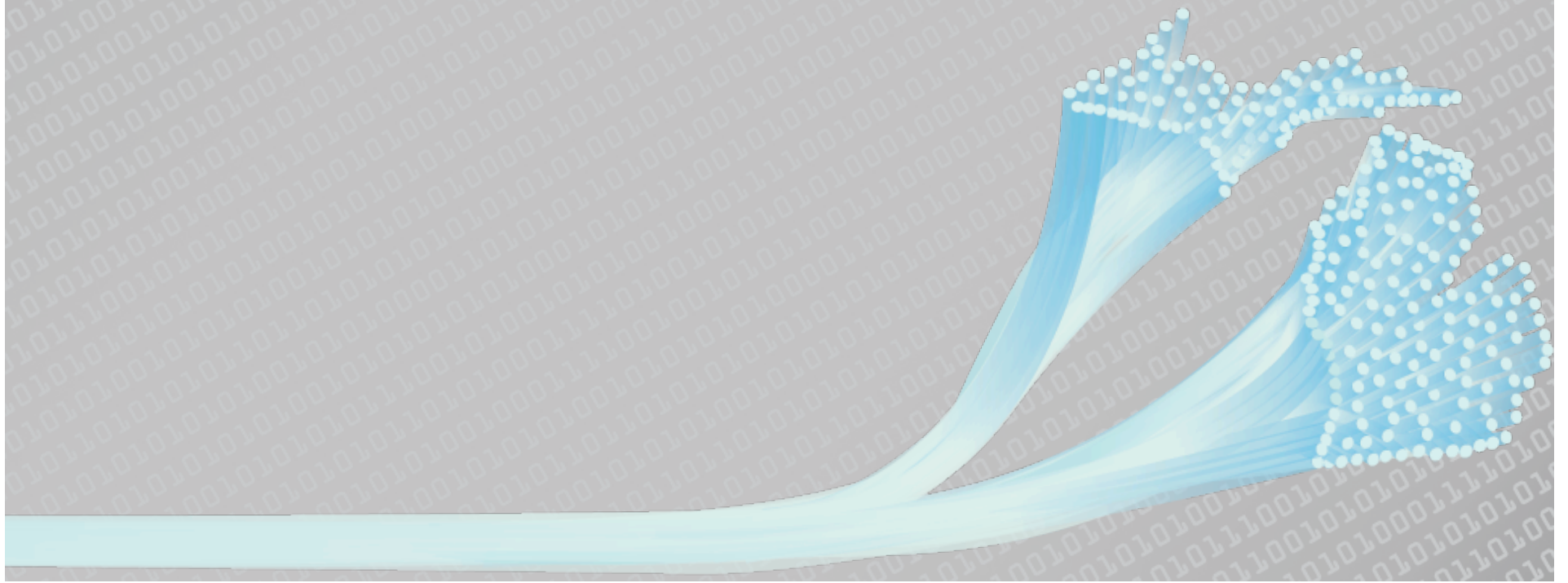


540 Sites



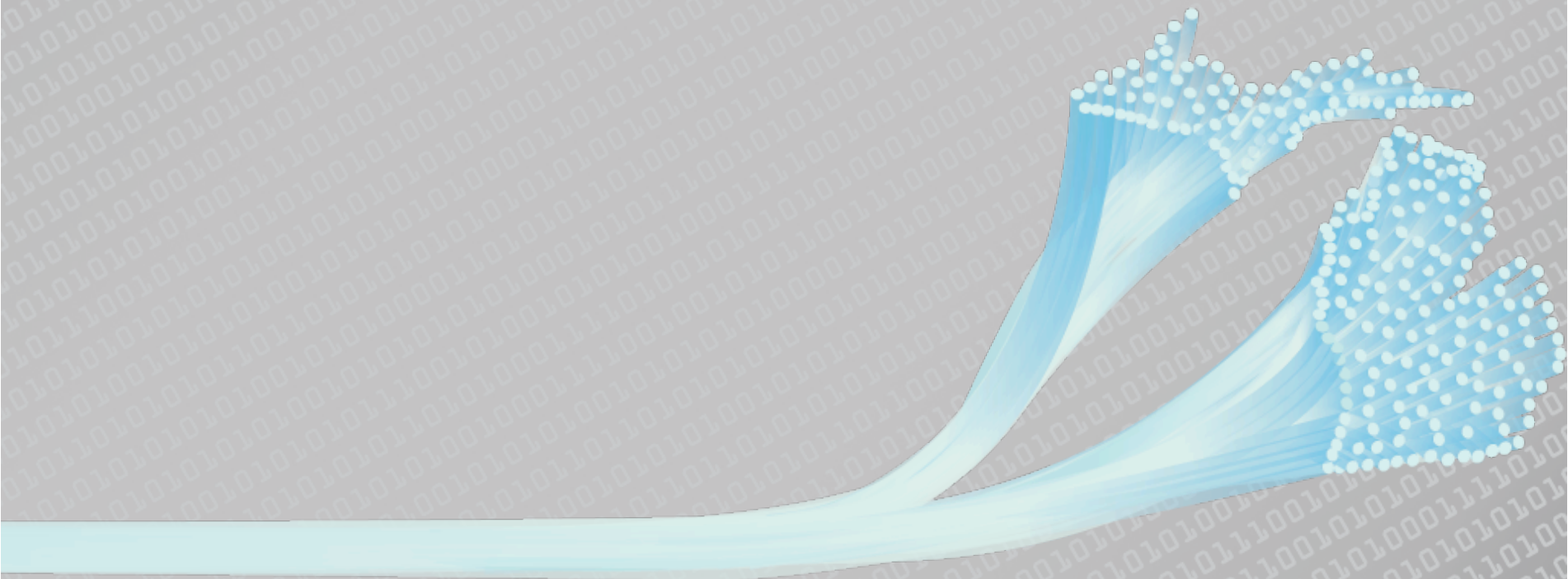
Success 1

LOA, DONE!!!



Challenge 2

Sustainability, need I say
more...



Michigan's FCC Rural Health Care Pilot Program

Jeff Shaw

jshaw@mphi.org

<http://fcc.mphi.org>

